

nedis



For Samsung

Press and hold the **[Power]** and **[Vol+]** key of 5 : 1 around 5 seconds until LED flash thrice and then release.



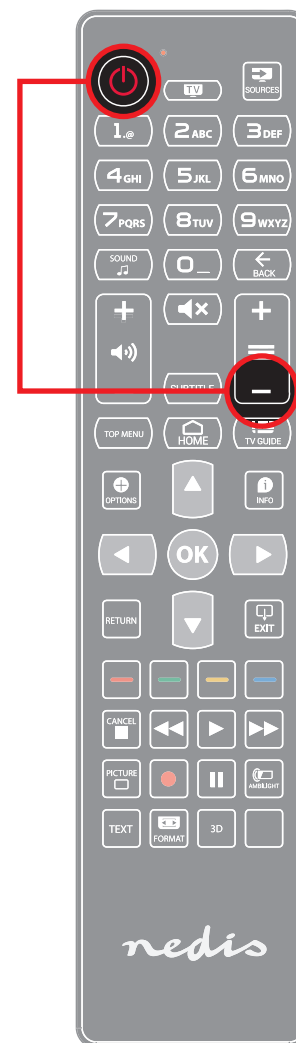
For LG

Press and hold the **[Power]** and **[Vol-]** key of 5 : 1 around 5 seconds until LED flash thrice and then release.



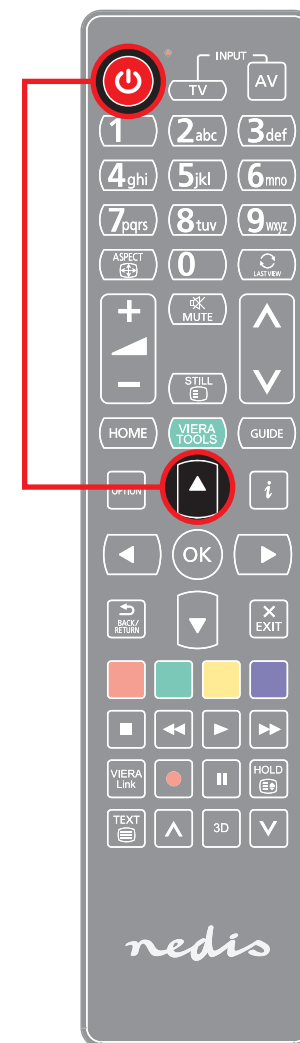
For Sony

Press and hold the **[Power]** and **[P+]** key of 5 : 1 around 5 seconds until LED flash thrice and then release.



For Philips

Press and hold the **[Power]** and **[P-]** key of 5 : 1 around 5 seconds until LED flash thrice and then release.



For Panasonic

Press and hold the **[Power]** and **[Up]** key of 5 : 1 around 5 seconds until LED flash thrice and then release.