

Introduction

The Alecto DVM2028 is a wireless audio/video observation system, suitable for private use indoor. You can either watch and listen continuously or you can have the baby monitor switch on.

ATTENTION

Before you start using the set, please remove any protective foil from the parent unit and baby unit.

Specifications

Range:

up to 50 metres indoors
up to 300 metres outdoors

Parent unit power:

3.6V rechargeable Li-ion battery, 2600 mAh, 9.36Wh
Model: ICR18650-2.6Ah-3.6V-1S1P
5VDC 1000mA power adaptor (incl.)
Model: VT05EEU05100

Baby unit power:

5VDC 1000mA power adaptor (incl.)
Model: VT05EEU05100
Frequency: 2405-2475 MHz
Modulation: FSK
RF-power: <20 dBm
Display: 2.8" Colour LCD (QVGA 320x240 pixel)

Recharging time parent unit battery: 6 - 7 hours

Life-span parent unit battery: 19 hours

Stand-by time up to 29 hours

Temperature sensor range: 10°C - 37°C

Accuracy: ±2°C (at 25°C)

Storage temperature: 0°C - 50°C

the times mentioned above are references only and depend on the usage, condition and quality of the batteries.

Rechargeable battery information:
Li-ion battery, 3.6V, 2600mAh, 9.36Wh
Zhuhai Great Power Energy Co., Ltd.
Model Number: ICR18650-2.6Ah-3.6V-1S1P

Declaration of conformity

Hereby, Commaxx declares that the radio equipment type Alecto DVM2028 is in compliance with directive 2014/53/EU. The full text of the EU declaration of conformity is available at the following Internet address: https://commaxx-certificates.com/doc/DVM2028_doc
Use of this equipment is allowed in all countries of the EU. In France, Italy, Russia and Ukraine, only indoor use is allowed.

Information power adaptors parent unit and baby unit:
Manufacturers name and address:
Vtech Telecommunications LTD, 23/F.,
Tai Ping Industrial Centre, Block 1, 57 Ting Kok Road,
Tai Po, Hong Kong.
Model Identifier: VT05EEU05100
Input voltage: 100 - 240V~
Input AC frequency: 50/60 Hz
Output voltage: 5.0V DC
Output current: 1.0 A
Output Power: 5.0 W
Average active efficiency: 74.0 %
Efficiency at low 10% load: -
No load Power consumption: 0.07 W

NOTE: The rating label is placed under the battery.

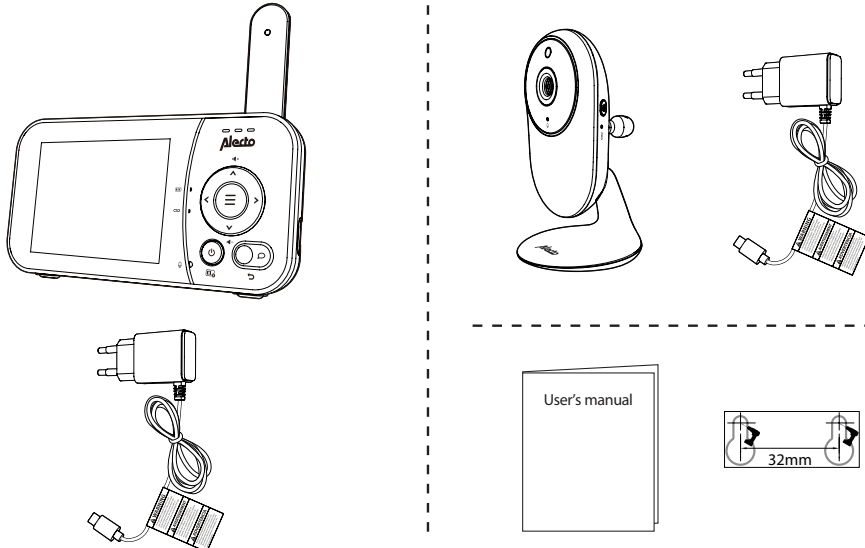


Important safety instructions

The applied nameplate is located at the bottom of the baby unit's base.

- CAUTION:** Do not install the baby unit at a height above 2 metres.
- CAUTION:** Use only the battery provided.
- There may be a risk of explosion if a wrong type of battery is used for the parent unit. The battery cannot be subjected to high or low extreme temperature and low air pressure at high altitude during use, storage or transportation. Disposal of battery in fire or a hot oven, mechanically crushing or cutting of the battery can result in an explosion. Leaving the battery in an extremely high temperature surrounding environment can result in an explosion or the leakage of flammable liquid or gas. Battery subjected to extremely low air pressure may result in an explosion or the leakage of flammable liquid or gas. Dispose of used batteries according to the instructions. For pluggable equipment, the socket-outlet should be installed near the equipment and should be easily accessible.
- Use and store the product at a temperature between 0°C and 40°C.

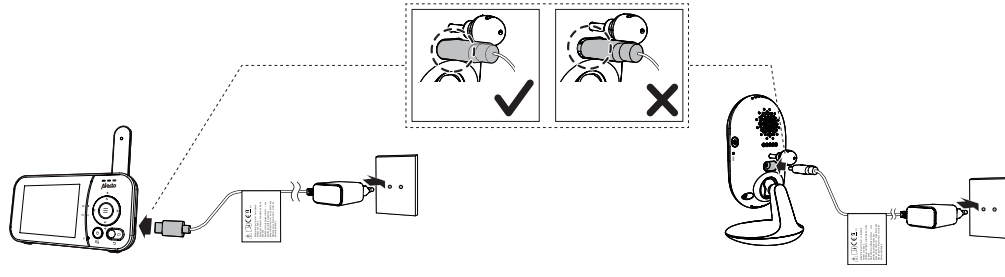
What's in the box



1 Connect the baby monitor

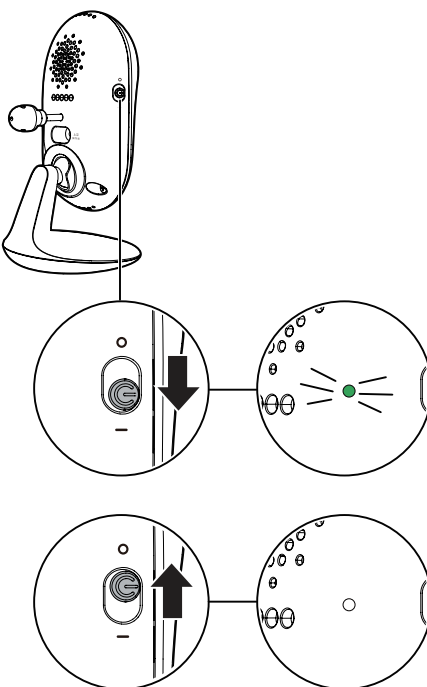
NOTES

- The rechargeable battery in the parent unit is built-in.
- Use only the power adaptors supplied with this product.
- Make sure the baby monitor is not connected to an electronically-controlled electric power outlet.
- Connect the power adaptors in a vertical or floor mount position only. The adaptors' prongs are not designed to hold the weight of a baby monitor, so do not connect them to any ceiling, under-the-table, or cabinet outlets. Otherwise, the adaptors may not properly connect to the outlets.
- Make sure the parent unit, the baby unit and the power adaptor cords are out of reach of children.

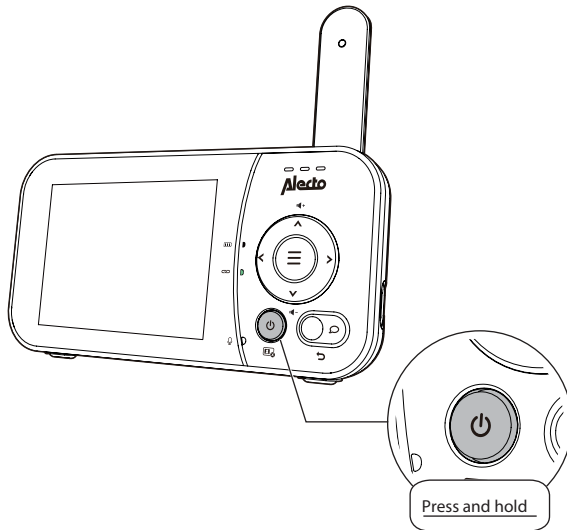


2 Power on or off the baby monitor

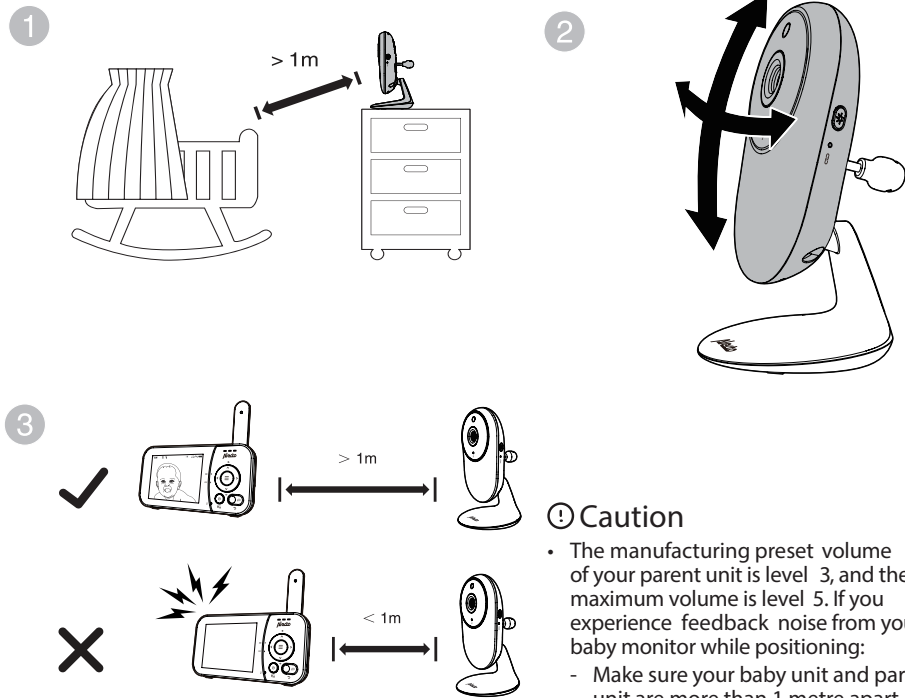
- Slide the switch to power on or off your baby unit.



- Press and hold the power button to power on or off your parent unit.



3 Positioning the baby monitor



Caution

- The manufacturing preset volume of your parent unit is level 3, and the maximum volume is level 5. If you experience feedback noise from your baby monitor while positioning:
 - Make sure your baby unit and parent unit are more than 1 metre apart, OR
 - Lower the volume of your parent unit.

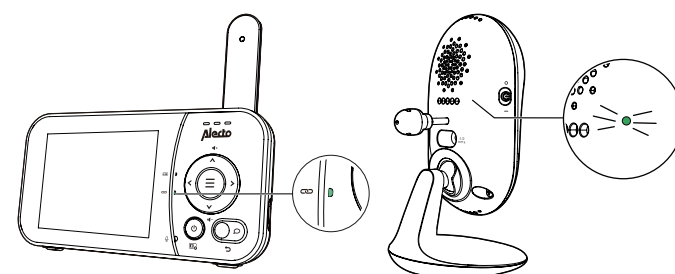
Note

- To avoid interference from other electronic devices, place your baby monitor at least 1 metre away from devices such as wireless routers, microwaves, mobile phones and computers.

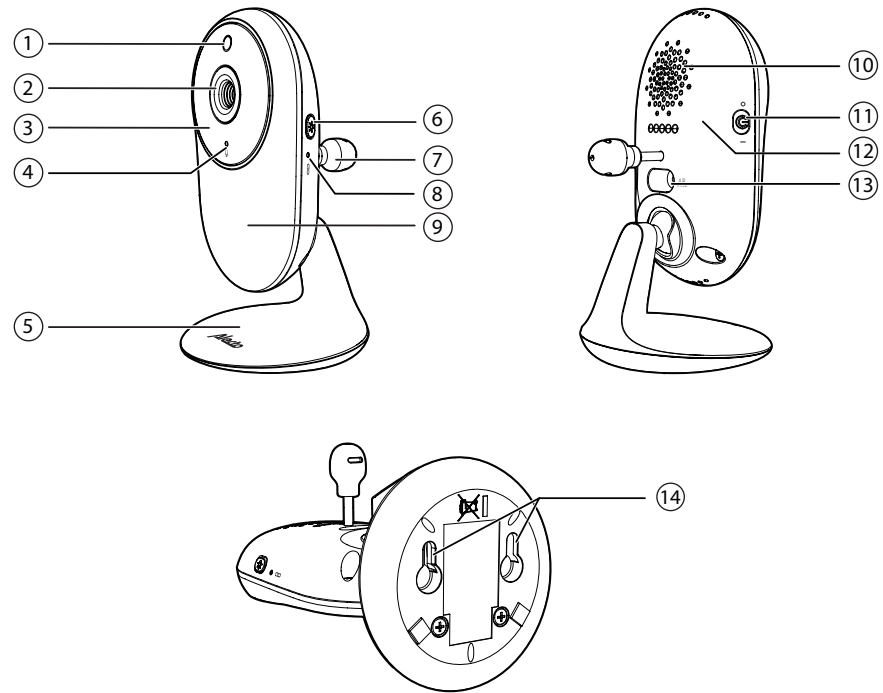
4 Status check

Once you power on both your baby unit and parent unit, your parent unit displays image from the baby unit, and the LED light turns on.

The LED light on the back of the baby unit also turns on.

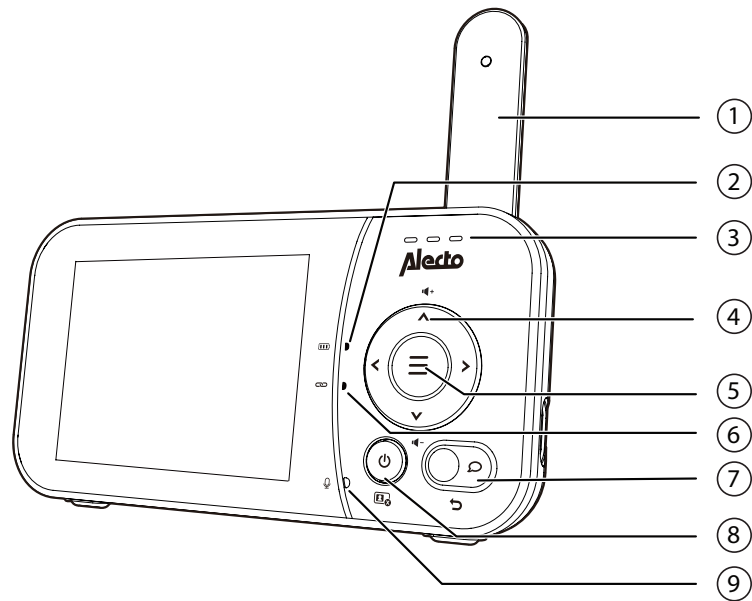


Overview - Baby unit

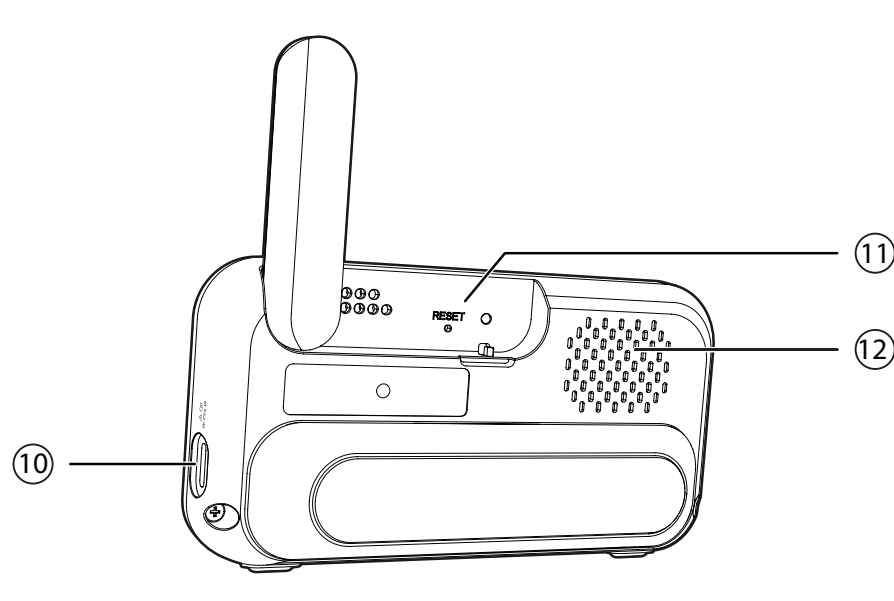


- Light sensor
- Camera
- Infrared LEDs
- Microphone
- Stand
- Night light switch
- Temperature sensor
- Pair key hole
 - Press and hold for 3 seconds to enter pairing mode.
- Night light
- Speaker
- ON/OFF switch
 - Slide to turn on or off the baby unit.
- Power LED light
 - On when the baby unit is turned on and is paired to the parent unit.
 - Flashes when the baby unit is not being viewed; or when the link to the parent unit has lost.
- Power jack
- Wall mount holes

Overview - Parent unit



- Antenna
 - Raise the antenna for an optimum range.
- Indicator:
 - Remains lit while the adaptor is connected and the battery pack is being charged or maintained.
 - Flashes when the battery pack is nearly empty and must be charged.
 - Switched off when the adaptor is disconnected and the battery pack's remaining capacity is still sufficient.
- 3-level sound indicator light
- Arrow keys
 - Press to navigate left, right, up and down within the main and sub-menus.
 - While viewing zoomed image, press to move the zoomed image leftward, upward, rightward or downward.
- Menu/Select
 - Press to enter the main menu.
 - While in a menu, press to choose an item, or save a setting.

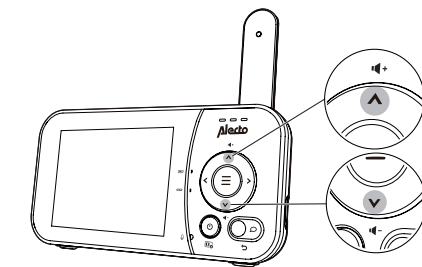


- Indicator
 - On when the parent unit is linked to the baby unit.
 - Flashes when the link to the baby unit being viewed is lost.
- Button
 - Press and hold to talk to the baby unit.
 - While in a sub-menu, press to exit.
- Power | LCD On/Off
- Built-in microphone
- Power jack
- RESET
 - Force reboot the parent unit.
- Speaker

Basic operation - Parent unit

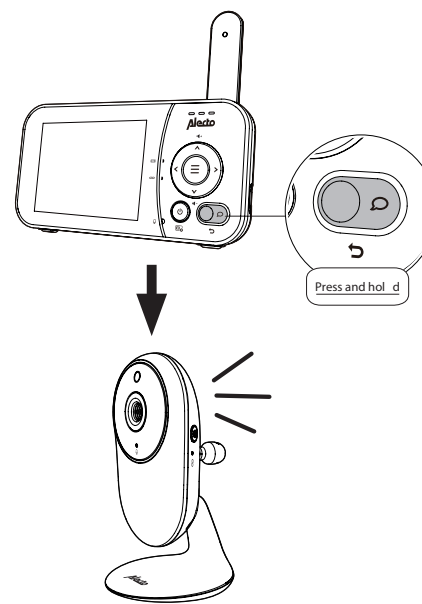
Adjust speaker volume

Press ▲/▼ to adjust your parent unit speaker volume.



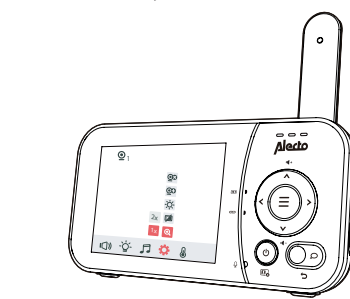
Talk to your baby unit

Press and hold the button and speak to your parent unit. Your voice is transmitted to the baby unit. Release the button when finished talking and hear your baby again.



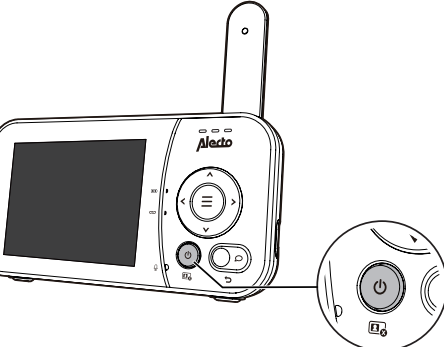
Zoom

- Press the menu button when in idle mode.
- Choose the zoom icon.
- Press ▲ or ▼ to choose 2x (Zoom in) or 1x (Zoom out), then press the menu button to confirm your selection.



Turn off the screen

Press the power button to switch off the screen. You can still hear sound from the baby unit.



Tip

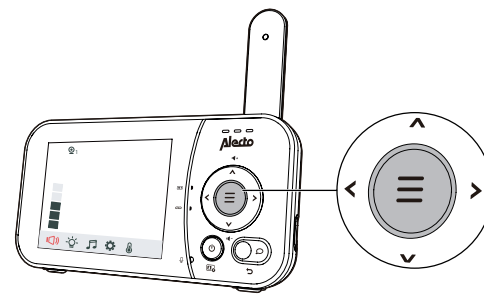
- Press any key on the parent unit to turn on the screen again.

Use the menu

Press the menu button to enter the menu, or save a setting. You can use the parent unit for advanced settings or operations, such as to play or stop the baby unit's lullaby, or to adjust the baby unit's sound sensitivity.

While in the menu:

- Press the left or right arrow to scroll among the menu options.
- Press ▲ or ▼ to select an item.
- Press the menu button to confirm your selection.
- Press the power button to exit the menu and return to live view.



Parent unit icons

Main menu

Sub-menu

Volume

Speaker icon

Parent unit speaker volume

Adjust the parent unit's speaker volume.

Auto

Auto timer: Sound Sensitivity Level

When a sensitivity level is selected, the parent unit screen will automatically turn on when detected sounds exceed the set level. You can adjust the baby unit microphone sensitivity level so that the higher the sensitivity level, the more sensitive the baby unit is in detecting sounds for transmitting to the parent unit. For details, see the Sound sensitivity and sound activation section.

The parent unit will then turn off again after 50 seconds if the sound detected is lower than the set level.

Note

When the parent unit screen is off, if alerts are received, for example, no signal received between the parent unit and baby unit, or a low battery, the parent unit screen will turn on.

Night Light

ON OFF

Turn on/off the night light.

Lullaby

Lullaby volume

Adjust the baby unit speaker volume when playing a lullaby.

Select between two lullabies or two sounds to play or stop on the baby unit.

OFF 15 min 30 min 60 min

Set the timer to OFF or stop playing after 15, 30 or 60 minutes.

Settings

1x 2x

Zoom

Zoom in and out of the video displayed from the baby unit.

OFF 5 min 15 min 30 min

Screen off timer

The parent unit screen will turn off after the selected time to save energy. You can still hear your baby while the screen is turned off.

Main menu

Sub-menu

Temperature

ON OFF

Turn on/off temperature alert tone.

Set the parent unit to beep whenever the room temperature detected by the baby unit falls outside of the set temperature range.

Set the minimum/maximum temperature.

°C °F

Set temperature display in Fahrenheit (°F) or Celsius (°C).

Monitoring Mode (For pairing with DVM2028C only)

Patrol mode

Monitor your baby in PATROL mode, where the screen will cycle through display videos streamed from all the linked baby units.

View the video from your selected baby unit's camera.

Warning icons and messages

Battery low at Parent Unit

The battery is low and needs to be recharged.

Loading

Loading is in progress.

Temperature too high

The temperature detected by the baby unit is higher than the maximum temperature alert setting.

Temperature too low

The temperature detected by the baby unit is lower than the minimum temperature alert setting.

The parent unit is searching for baby unit or the link between the baby unit and the parent unit has been lost, for example, due to out of range.

Searching Camera

Charging

The parent unit is connected to AC power.

Parent unit icons (Cont'd)

Status icons

Connection status

Signal strength icons

displays when strong signal strength is detected between the baby unit and the parent unit.

displays when moderate or low signal strength is detected between the baby unit and the parent unit.

Current view status

Displays the baby unit number that is being viewed.

Patrol mode

Displays when the parent unit is in PATROL mode (For pairing with DVM2028C only).

Zoom

Displays when the current image on the parent unit has zoomed in.

Night vision

Displays when the baby unit being viewed has activated the night vision feature.

Talkback

Displays when talking back to the baby unit from parent unit.

Lullaby

Displays when a lullaby is playing.

Night light

Displays when the baby unit's night light is turned on.

Mute alert

Displays when the parent unit speaker volume is set to zero.

Displays when the parent unit is talking to the baby unit.

Real-time temperature

Displays the real-time temperature detected by the baby unit in Fahrenheit (°F) or Celsius (°C) (e.g. 57°F or 14°C).

Battery status

Charging icon

 animates when the battery is charging.

Fully charged icon

 displays solid when the battery is fully charged.

Low battery icon

 displays when the battery is low and needs charging.

Sound sensitivity and sound activation

Adjust the sound sensitivity of the baby unit

The parent unit screen will turn on only when the detected sounds exceed a set level.

Use the parent unit to adjust the microphone sensitivity of your baby unit. The higher the sensitivity level, the more sensitive the baby unit is in detecting sounds that transmit to the parent unit. The manufacturing preset sound sensitivity level is set to the highest level.

Sound Sensitivity level

Highest High Medium Low Lowest

The parent unit screen turns on for quiet sounds, (including background noises) from your baby's room.

The parent unit screen turns on for soft babbling and louder sounds from your baby. It remains off when your baby sleeps soundly.

The parent unit screen turns on for loud babbling and louder sounds from your baby. It remains off when your baby makes soft sounds.

The parent unit screen turns on for crying and louder sounds from your baby. It remains off when your baby makes soft sounds.

The parent unit screen turns on for loud crying or screeching sounds from your baby. It remains off when your baby makes soft sounds.

When a sensitivity level is selected, the parent unit screen stays off to save power when the baby unit detects sounds that are lower than the set sensitivity level. Once the baby unit detects sounds that are louder than the set sensitivity level, the parent unit screen turns on automatically. It will then turn off again after 50 seconds if the sounds detected are lower than the set sensitivity level.

Normal sound

High sound

Night vision

The baby unit has infrared LEDs that allow you to see your baby clearly at night or in a dark room. When the baby unit detects low light levels, the infrared LEDs are switched on automatically. The images from the baby unit are in black and white, and appears on the parent unit screen.

Notes

A click sound from the baby unit is normal and occurs when your unit adapts to the environment lighting conditions.

To achieve accurate and high quality video, your baby unit is equipped with an Infrared Cut-off Filter lens that optimizes colour accuracy in bright, day-time environments. When the environment turns dark at night, this filter lens is withdrawn to enhance night vision quality. The brief click sound you hear is from the filter lens activating and withdrawing as the unit switches from day to night vision (and vice versa).

Tip

Depending on the surroundings and other interfering factors, for example, lighting, objects, colours and backgrounds, the image quality may vary. Adjust the baby unit angle or place the baby unit at a higher location to prevent glare and a blurred display.

Mount the baby unit on dry wall (optional)

Notes

Check for reception strength and baby unit's angle before drilling the holes.

The types of screws and wall plugs you need depend on the composition of the wall. You may need to purchase the screws and wall plugs separately to mount your baby units.

Note

Check for reception strength and camera angle before drilling the holes.

1

Use the mounting guide to mark the hole positions on the wall, ensuring they are horizontally parallel.

2

Drill two holes in the wall (5.5 mm drill bit). If you drill the holes into a stud, go to step 3.
-OR-
If you drill the holes into an object other than a stud, insert the wall plugs into the holes. Tap gently on the ends with a hammer until the wall plugs are flush with the wall.

3

Peel off the mounting guide, insert the screws into the holes and tighten the screws until only 6.5 mm of the screws are exposed.

4

Align the wall mount holes on the baby unit with the screws on the wall. Slide the baby unit down until it locks into place.

5

Adjust the camera angle.

Tips and remarks

INTERFERENCE-FREE:

This baby display monitor is digitally coded. This means you will never receive signals from other devices, nor can the signal from your baby unit(s) be received by e.g. your neighbors.

In case the baby unit(s) or parent unit is placed in or in the close vicinity of electromagnetic fields, the signal (images or sound) can be slightly affected. If this happens, try a different location for the baby unit(s) or parent unit or move, if possible, the source of the interference.

EAVESDROPPING/WIRETAPPING:

Eavesdropping/wiretapping of the signals from this baby video monitor is nearly impossible. Not only must one be within range of the baby video monitor, one also needs some very costly equipment.

MAINTENANCE:

Only clean the baby monitor with a moist cloth; never use chemical cleaners. Before any cleaning, you must disconnect the adaptors.

RANGE:

The baby display monitor has a range of up to 300 metres in an open field and up to 50 metres indoors; this range depends on local circumstances.

DELAY IN IMAGES AND SOUND:

The baby unit transmits the images and sound to the parent unit in digital blocks. The parent unit converts these signals back to a recognizable image and a comprehensible sound. Therefore, there is a small delay between the moment of movement and making sounds and the display and sounds of the parent unit.

Besides that, the sounds and images on the parent unit are not exactly simultaneous.

CE

V1.0

Commaxx BV

Wiebachstraat 37

6466 NG Kerkrade

The Netherlands

www.alectobaby.com