

EW-7611UCB

User Manual

08-2022 / V1.0

Edimax Technology Co., Ltd.

No. 278, Xinhua 1st Rd., Neihu Dist., Taipei City, Taiwan

Email: support@edimax.com.tw

Edimax Technology Europe B.V.

Fijenhof 2, 5652 AE Eindhoven, The Netherlands

Email: support@edimax.nl

Edimax Computer Company

530 Technology Drive Suite 100, Irvine, CA 92618, USA

Email: support@edimax.us

Contents

I.	<i>Product Information</i>	1
I-1.	Package Contents	1
I-2.	Hardware Overview.....	1
I-3.	LED Status	1
I-4.	Supported System	1
II.	<i>Windows Plug-and-Play Installation</i>	2
II-1.	Wi-Fi Installation.....	2
II-1-1.	Insert the USB Adapter	2
II-1-2.	Wi-Fi Plug-and-Play	2
II-1-3.	Select & Connect to the Wi-Fi Network	3
II-2.	Bluetooth Installation.....	5
II-2-1.	Insert the USB Adapter	5
II-2-2.	Bluetooth Plug-and-Play	5
II-2-3.	Pair with Bluetooth Device	6
III.	<i>Windows Driver Installation</i>	7
III-1.	Insert the USB Adapter	7
III-2.	Download the Driver	7
III-3.	Connect or Pair	9
III-3-1.	Wi-Fi Connection.....	9
III-3-2.	Bluetooth Pairing	12

IV. <i>macOS Driver Installation</i>	15
IV-1. Insert the USB Adapter	15
IV-2. Download & Install the Driver	15
IV-3. Connect to a Wi-Fi Network	20
V. <i>Advanced Feature</i>	22
V-1. Software WPS	22
V-2. Hardware WPS.....	23
VI. <i>Frequently Asked Question (FAQ)</i>	24
VII. <i>More Information</i>	25
VIII. <i>Safety Instructions</i>	26
IX. <i>Simplified EU Declaration of Conformity</i>	26

I. Product Information

I-1. Package Contents

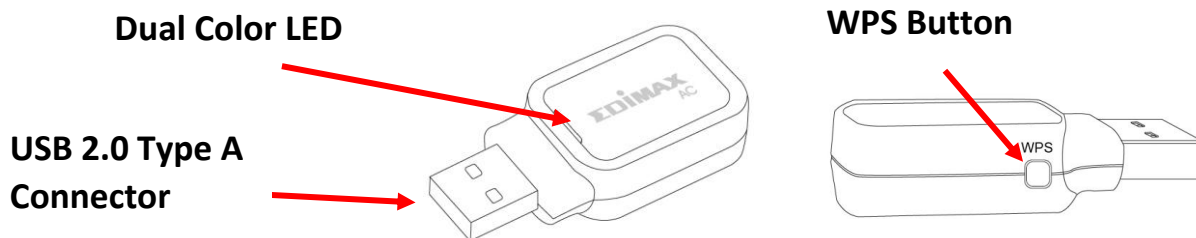


USB Adapter



Quick Installation Guide

I-2. Hardware Overview



I-3. LED Status

LED Color	LED Status	Description
Blue	On	Bluetooth function ON.
	Off	Bluetooth function Off.
Green	Slow Flash	Wireless is not connected.
	Quick Flash	Wireless is connected.

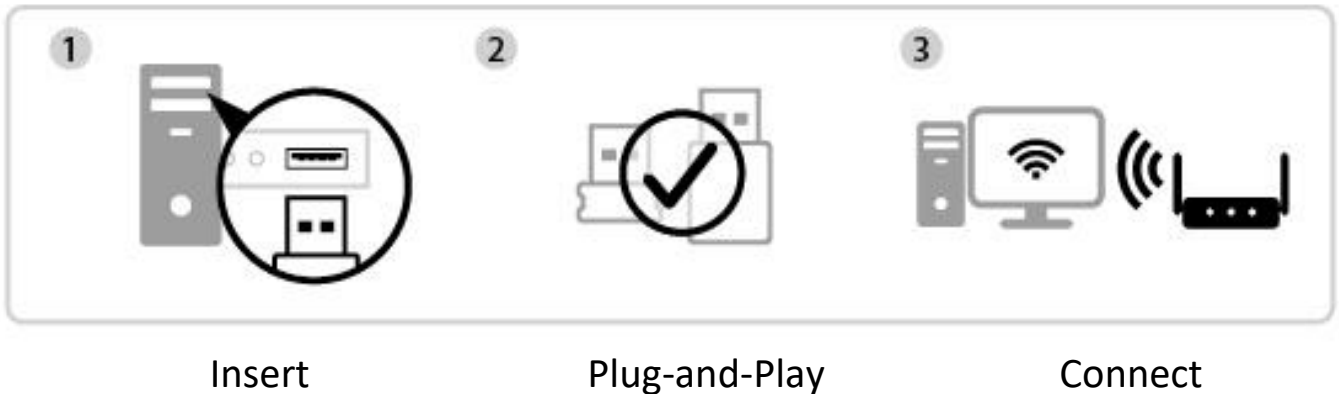
 ***The green LED is only visible if Bluetooth feature is off (blue LED off).***

I-4. Supported System

- Windows 7 / 8.x / 10 / 11
 - macOS 10.9 ~ 10.15 (Wi-Fi Only)
 - Linux (Wi-Fi Only)
- * Additional version information may be announced on the EDIMAX website.

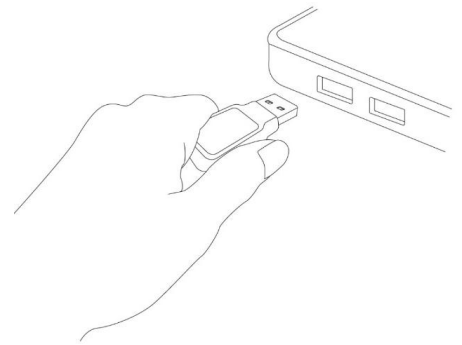
II. Windows Plug-and-Play Installation

II-1. Wi-Fi Installation




II-1-1. Insert the USB Adapter

1. Insert the USB adapter into your computer and then switch on your computer.



Never use force to insert the USB adapter.

II-1-2. Wi-Fi Plug-and-Play

1. The Network icon  will be displayed on the bottom-right corner of the Windows taskbar if Plug-and-Play is supported. (If the Network icon doesn't display, please refer to VI. FAQ -> Q1)



Notice that the Network icon might be different depending on the version of your Operating System.





If your Operating System does not recognize the USB adapter, you will need to install an additional driver on your computer. Please refer to "Section III".




II-1-3. Select & Connect to the Wi-Fi Network

Select your Wi-Fi Network (SSID), click “**Connect**” and enter the password if it is required.



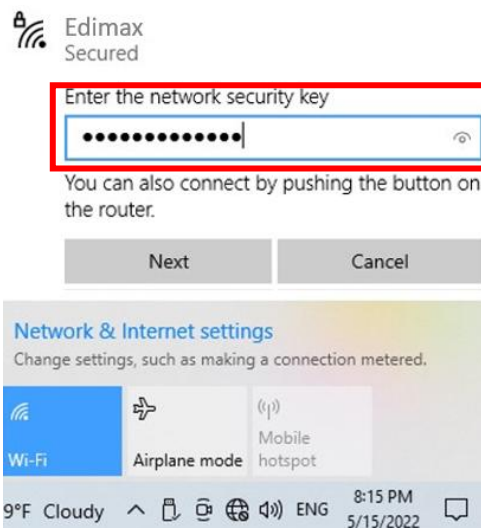
1. For Windows 11 users, click the Network icon  and then click the right-arrow icon  to show the existing Wi-Fi Network (SSID) and select the one you want to connect. Move to step 3 if a password is required.



2. For Windows 10 users, click the Network icon  to show the existing Wi-Fi Network (SSID) and select the one you want to connect.



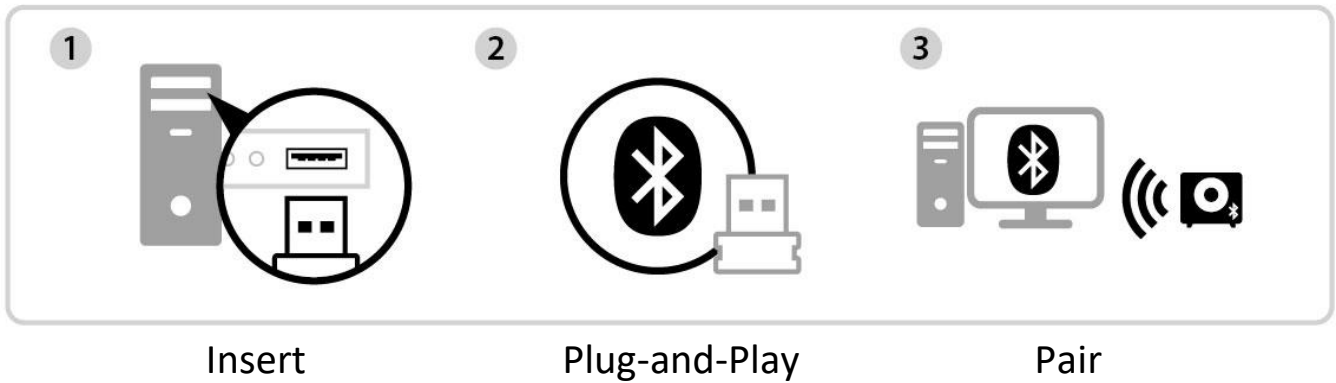
3. Enter the password if it is required.



4. Establish the Wi-Fi connection and you can access Internet when you see the Wi-Fi icon on the bottom-right corner of the Windows taskbar.



II-2. Bluetooth Installation



II-2-1. Insert the USB Adapter

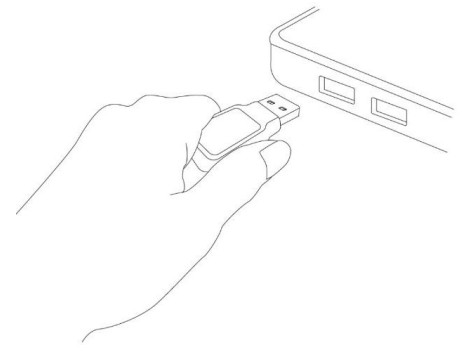
Insert the USB adapter into your computer and then switch on your computer.




Never use force to insert the USB adapter.



Please disable all the existing Bluetooth devices before inserting the device into your computer. (Refer to VI. FAQ -> Q2)



II-2-2. Bluetooth Plug-and-Play

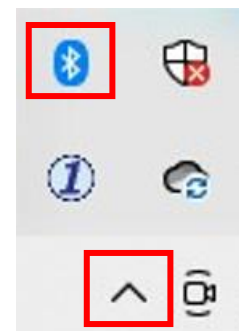
If your Windows OS supports Plug-and-Play, the Bluetooth icon  will be displayed on the bottom-right taskbar. (If Bluetooth icon doesn't display, please refer to VI. FAQ -> Q4)



Notice that if the Bluetooth icon does not show up, continue to click the arrow-up icon.

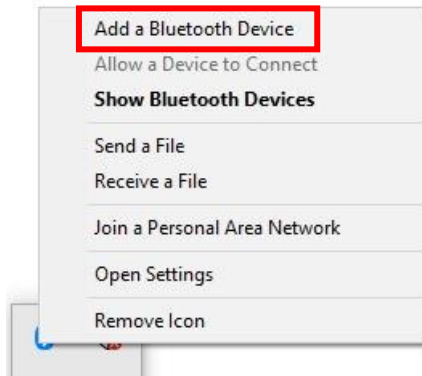


If your Operating System does not recognize the USB adapter, you need to install an additional driver on your computer. Please refer to "Section III".

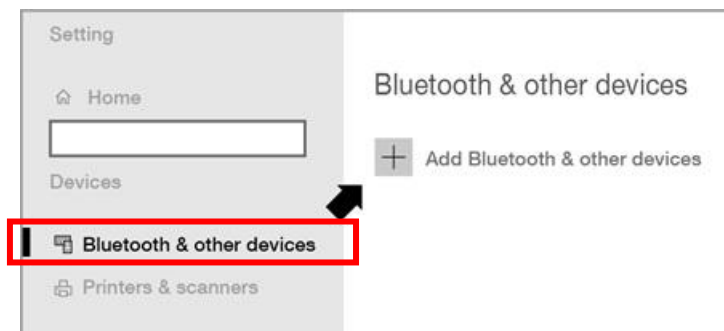


II-2-3. Pair with Bluetooth Device

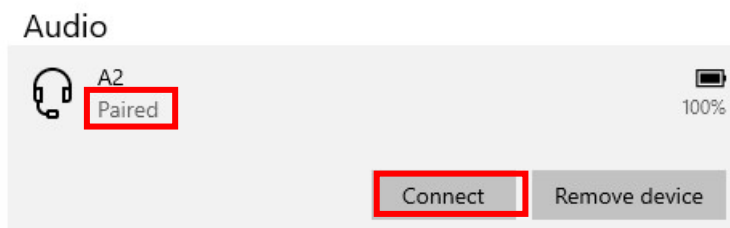
1. Click “Add a Bluetooth Device”.



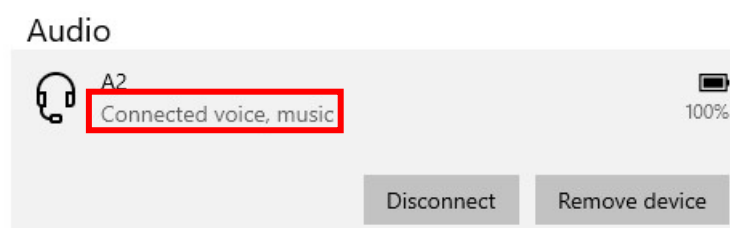
2. Select existing Bluetooth devices from the list or click “Bluetooth & other devices” to add an new Bluetooth device.



3. Select the Bluetooth device in “Paired” status you want to pair with and click “Connect”.



4. Once the status is “Connected”, the connection is established.



III. Windows Driver Installation



III-1. Insert the USB Adapter

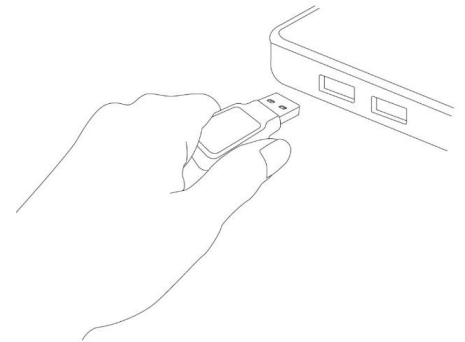
Insert the USB adapter into your computer and then switch on your computer.



Never use force to insert the USB adapter.



Please disable all the existing Bluetooth devices before inserting the device into your computer. (Refer to VI. FAQ -> Q2)




III-2. Download the Driver

1. You can find the USB adapter driver from the Edimax website.

<https://www.edimax.com/download>

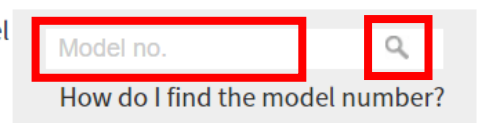


If your computer can not access the Internet directly, please use an Internet-Enabled device to download the driver instead.

2. Enter the model number and click  to continue.

Download

To select your product and find related download materials, enter the model number into the search box on the right side or follow the simple steps below:



3. Click on the model number.

1.  **Products > Home > Wireless Adapters > AC600 Dual-Band > EW-7611UCB**
EW-7611UCB
AC600 Dual-Band Wi-Fi & Bluetooth 4.0 USB Adapter



Ensure the model number corresponds with your USB adapter.

4. Scroll down the web page and select the correct OS version. Move the cursor to the “Download icon” and save the driver on the computer desktop or a location you prefer.



Ensure you download the correct version.

Title	File Type	File Size	
EW-7611UCB Linux driver Wi-Fi driver Version 1.0.1.0 & Bluetooth driver version 1.0.0.8 Support Kernel : 2.6.18-5.8(only support Fedora & Ubuntu) (Version : 1.0.1.0) 2021-08-05	ZIP	6.53 MB	
EW-7611UCB Mac Driver Support OS : Mac 10.15 WPA3 SAE is only supported in Mac. (Version : 1.0.0.8) 2021-05-25	ZIP	9.49 MB	
EW-7611UCB Windows Driver_Wi-Fi Support OS:Windows 7/8/8.1/10 WPA3 SAE is only supported in Windows. (Version : 1.0.0.8) 2021-05-25	ZIP	58.01 MB	
EW-7611UCB Windows Driver Support OS:Windows 7/8/8.1/10 Bluetooth & Wi-Fi (Version : 1.0.0.6) 2020-09-24	ZIP	114.98 MB	
Support OS:MAC 10.15 Languages:English (Version : 1.0.0.7) 2020-02-11	ZIP	9.46 MB	
Support OS:MAC 10.9~10.14 Languages:English (Version : 1.0.0.4) 2019-12-23	ZIP	5.99 MB	



Copy the driver to the USB flash drive first if you downloaded the driver on another Internet-Enabled device and insert the USB flash drive to the computer you will use the Wi-Fi USB adapter

5. Move the cursor to the driver you just downloaded and extract the file.

III-3. Connect or Pair

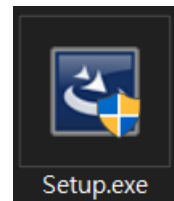
III-3-1. Wi-Fi Connection

III-3-1-1. Wi-Fi Driver Installation

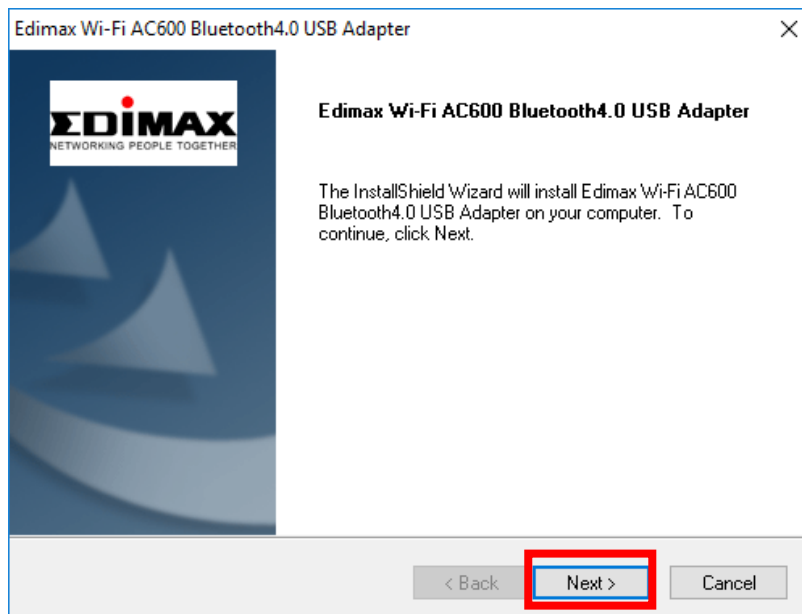
1. To install the Wi-Fi, once it's uncompressed fully, access the folder "WiFi" and click "Setup.exe" to continue.



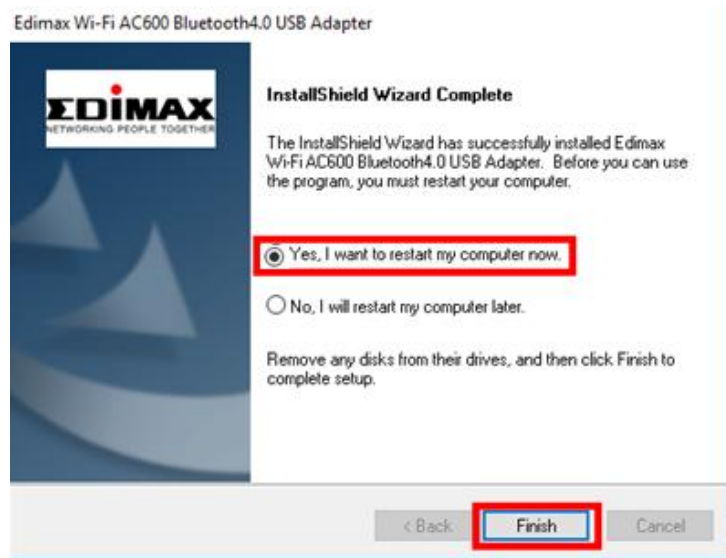
Notice that the both Wi-Fi and Bluetooth drivers are in the same filename but in different folders.



2. Once the installation process starts, click "Next" to continue.




3. When the installation is completed, you will be asked to select whether you wish to restart your computer now or later. Select **“Yes”** and click **“Finish”** to continue.



4. Please make sure your computer has been restarted before you go to next step.



III-3-1-2. Connect to a Wi-Fi Network

1. After you restart your computer, the Network icon  will be displayed on the bottom-right corner of the Windows taskbar. (Refer to VI. FAQ->Q3)




Notice that the Wi-Fi icon might be different depending on your Operating System version.



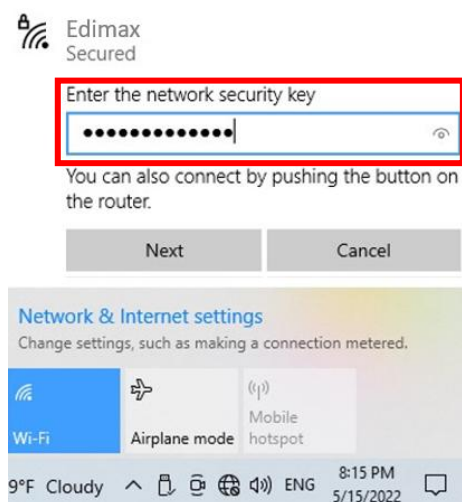
2. For Windows 11 users, click the Network icon  and then click the right-arrow icon  to show the existing Wi-Fi Network (SSID) and select one you want to connect. Move to step 4 if a password is required.



3. For Windows 10 users, click the Network icon  to show the existing Wi-Fi Network (SSID) and select the one you want to connect.



4. Enter the password if it is required.



5. Establish the Wi-Fi connection and you can access the Internet when you see the Wi-Fi icon on the bottom-right corner of the Windows taskbar.



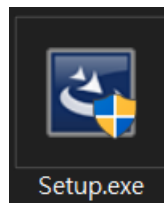
III-3-2. Bluetooth Pairing

III-3-2-1. Bluetooth Driver Installation

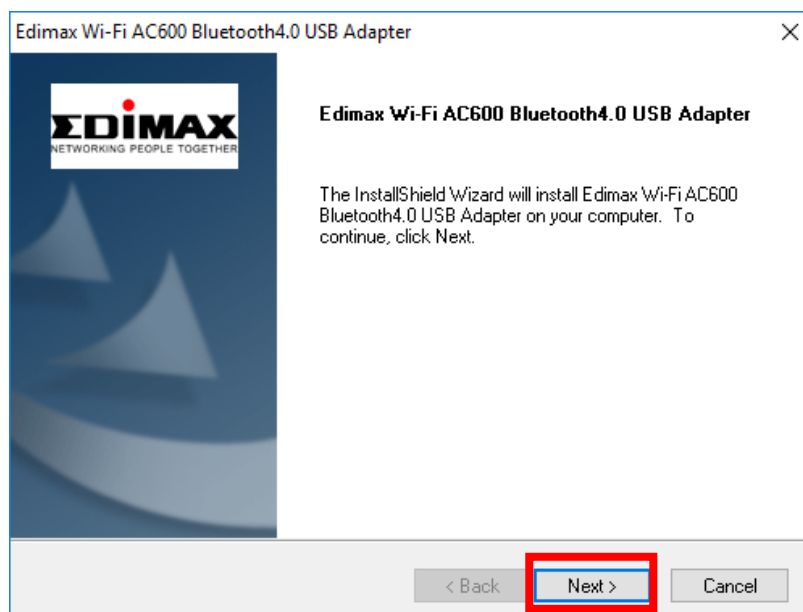
1. To install the Bluetooth, once it's uncompressed fully, access the folder "Bluetooth" and click "Setup.exe" to continue.



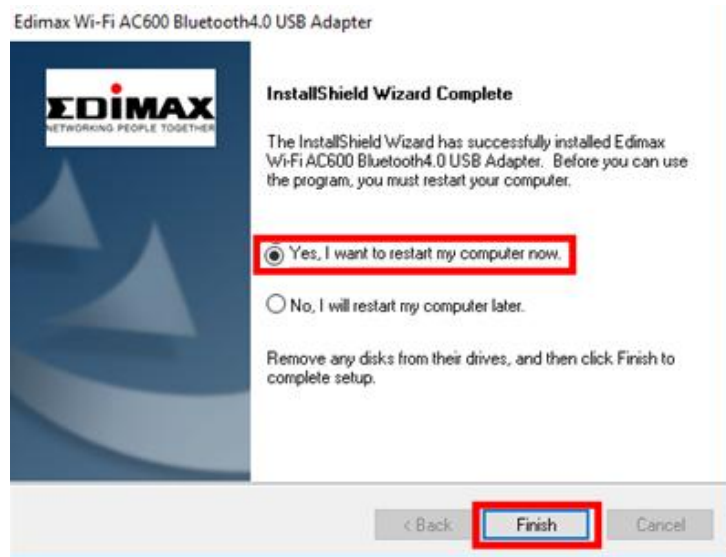
Notice that both Wi-Fi and Bluetooth drivers are in the same filename but in different folders.




2. Click "Next" to continue and follow the instructions on-screen until installation is completed.



3. When the installation is completed, you will be asked to select whether you wish to restart your computer now or later. Select **“Yes”** and click **“Finish”** to continue.



III-3-2-2. Pair with the Bluetooth Devices

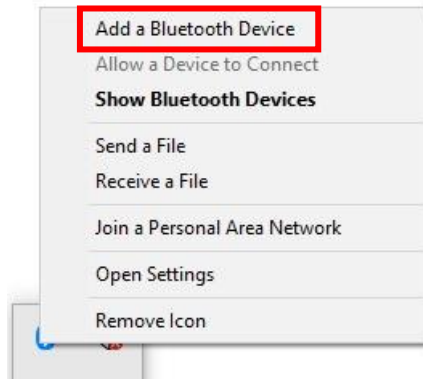
1. Click the Bluetooth icon  displayed on the bottom-right taskbar to pop up the menu. (If Bluetooth icon is not displayed, please refer to VI. FAQ -> Q4)



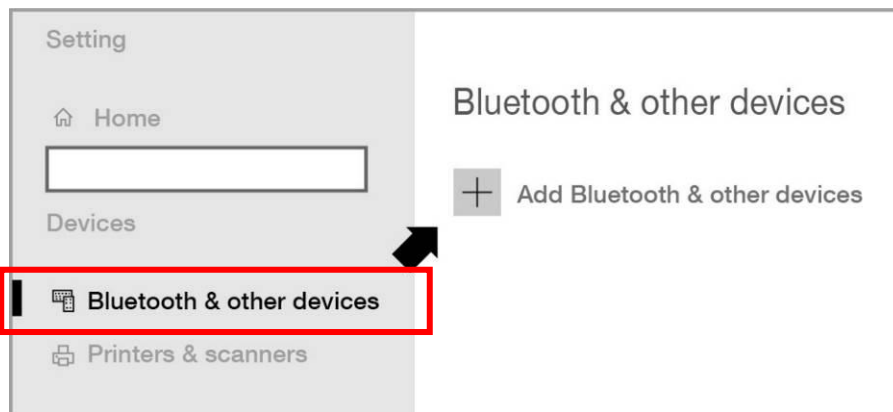
Notice that if the Bluetooth icon does not show up, click the arrow-up icon.



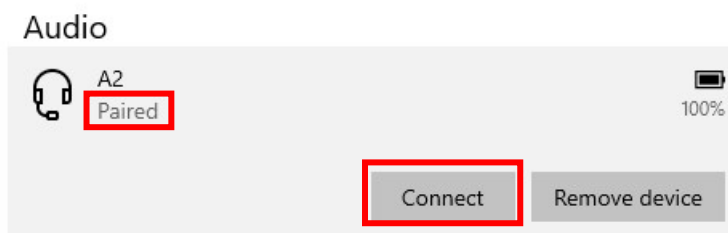
2. Click “Add a Bluetooth Device”.



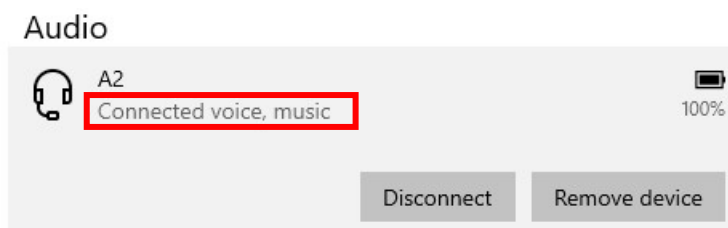
3. Select the existing Bluetooth devices from the list or click “Bluetooth & other devices” to add new Bluetooth devices.



4. Select the Bluetooth device in “Paired” status you want to pair with and click “Connect”.



5. Once the status is “Connected”, the connection is established.

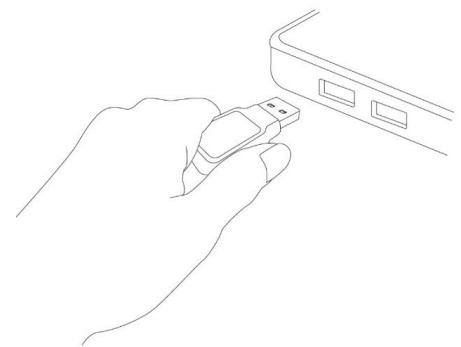


IV. macOS Driver Installation



IV-1. Insert the USB Adapter

1. Insert the USB adapter into the USB port and then switch on your computer.



Never use force to insert the USB adapter.


IV-2. Download & Install the Driver

1. You can find the driver from the Edimax website.

<https://www.edimax.com/download>

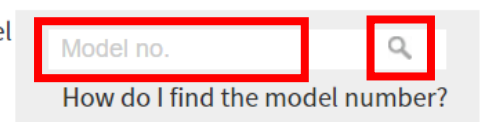


If your MAC can not access the Internet directly, please use an Internet-Enabled device instead.

2. Enter the model number and then click  to continue.

Download

To select your product and find related download materials, enter the model number into the search box on the right side or follow the simple steps below:



3. Click on the model number.

1.  Products > Home > Wireless Adapters > AC600 Dual-Band > **EW-7611UCB**
EW-7611UCB
AC600 Dual-Band Wi-Fi & Bluetooth 4.0 USB Adapter



Ensure the model number corresponds with the USB adapter.

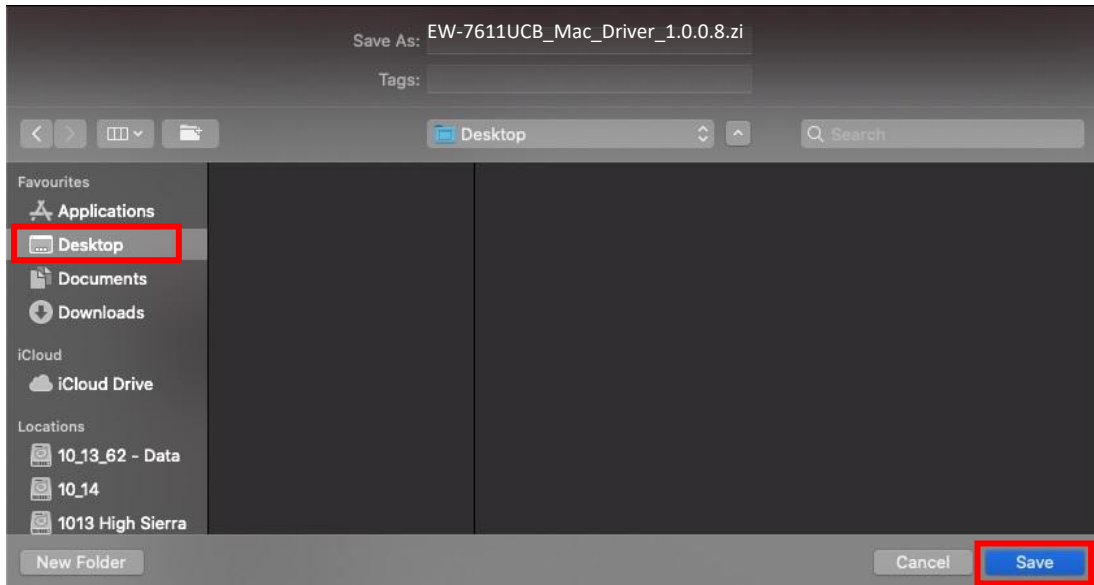
4. Scroll down the web page and select the right OS version. Move the cursor to the “Download icon” and save the driver on the computer desktop or a location you prefer.



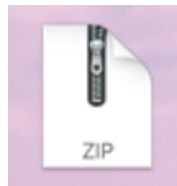
Ensure you select the correct file for your version of Mac OS. To check your version of Mac OS, click the Apple logo in the top left corner of your desktop and go to “About This Mac”.

Title	File Type	File Size	
EW-7611UCB Linux driver Wi-Fi driver Version 1.0.1.0 & Bluetooth driver version 1.0.0.8 Support Kernel : 2.6.18-5.8(only support Fedora & Ubuntu) (Version : 1.0.1.0) 2021-08-05	ZIP	6.53 MB	
EW-7611UCB Mac Driver Support OS : Mac 10.15 WPA3 SAE is only supported in Mac. (Version : 1.0.0.8) 2021-05-25	ZIP	9.49 MB	
EW-7611UCB Windows Driver_Wi-Fi Support OS:Windows 7/8/8.1/10 WPA3 SAE is only supported in Windows. (Version : 1.0.0.8) 2021-05-25	ZIP	58.01 MB	
EW-7611UCB Windows Driver Support OS:Windows 7/8/8.1/10 Bluetooth & Wi-Fi (Version : 1.0.0.6) 2020-09-24	ZIP	114.98 MB	
Support OS:MAC 10.15 Languages:English (Version : 1.0.0.7) 2020-02-11	ZIP	9.46 MB	
Support OS:MAC 10.9~10.14 Languages:English (Version : 1.0.0.4) 2019-12-23	ZIP	5.99 MB	

5. Click “**Download Linked File As...**” and select “**Desktop**” and click “**Save**” to store the driver on the computer desktop.



6. Move the cursor to the file you downloaded and double click to extract it.

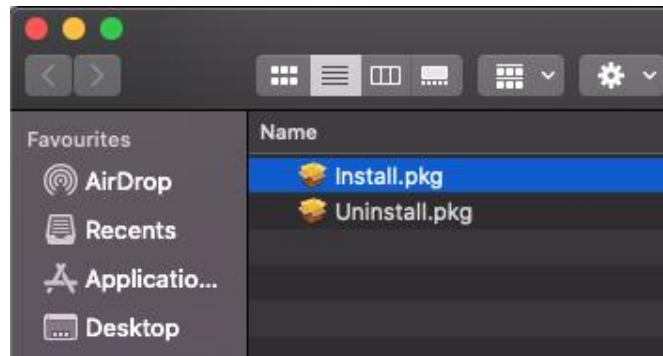


Copy the driver to the USB adapter first if you downloaded the driver on another Internet-Enabled device then insert the USB flash drive to the computer you will use the Wi-Fi USB adapter.

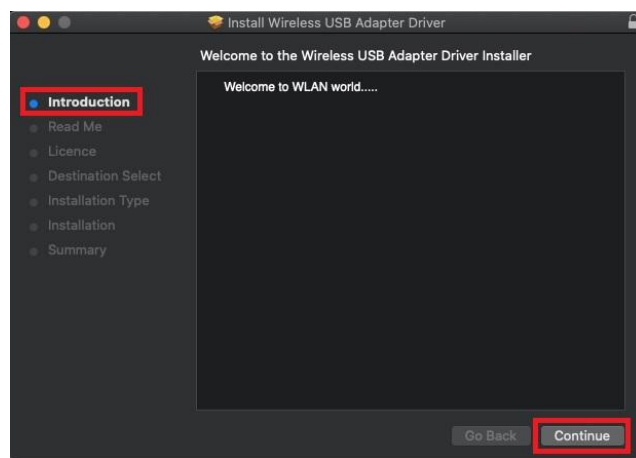
7. Once the driver is uncompressed, you will see a new folder.



8. Access the folder and click “Install.pkg” to continue.



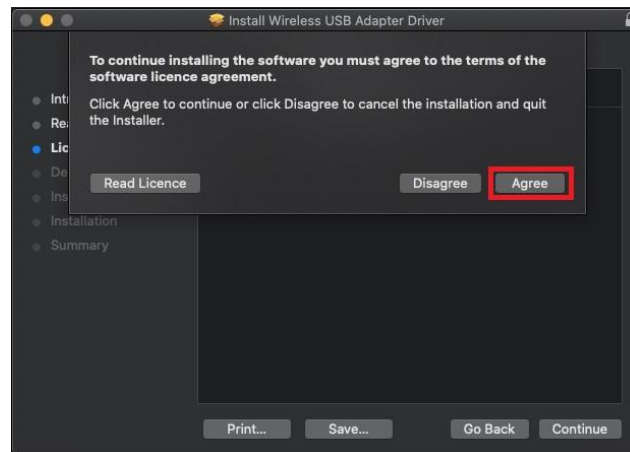
9. Click “Continue” to start installation procedures.



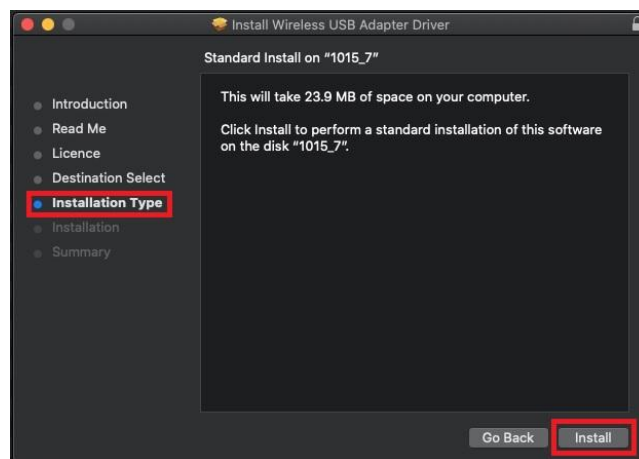
10. The screen displays important information, please read it carefully. Click “Continue” when you are ready.



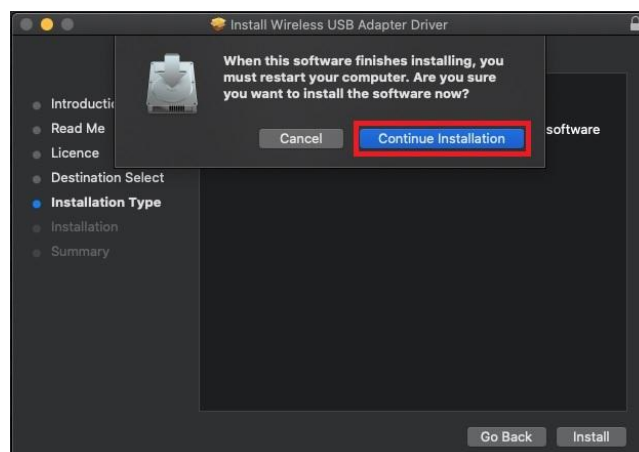
11. To read the software license click “**Read License**” and then click “**Agree**” to confirm you agree to the terms. You must agree to the terms to continue installing the software.



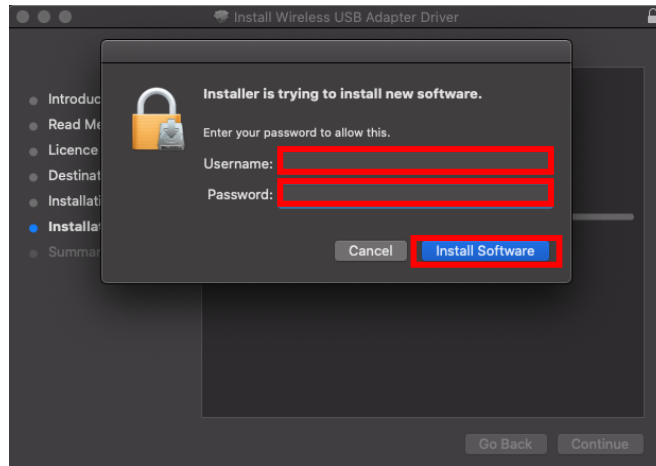
12. Once the information about the disk space prompts, click “**Install**” to continue.



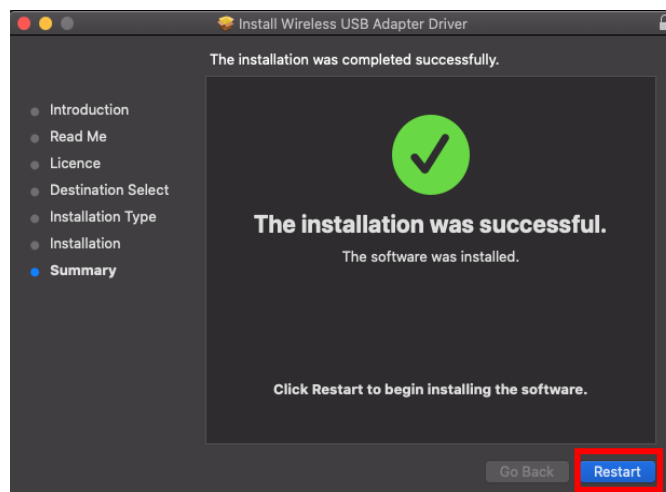
13. Click “**Continue Installation**” to install the driver.




14. Enter system administrator's "Username" and "Password" and click and click "Install Software".

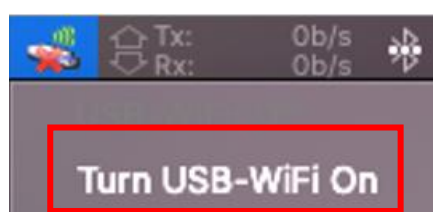


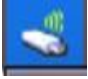
15. The installation will take you a few minutes, once the installation is completed, click "Restart" to reboot your computer.



IV-3. Connect to a Wi-Fi Network

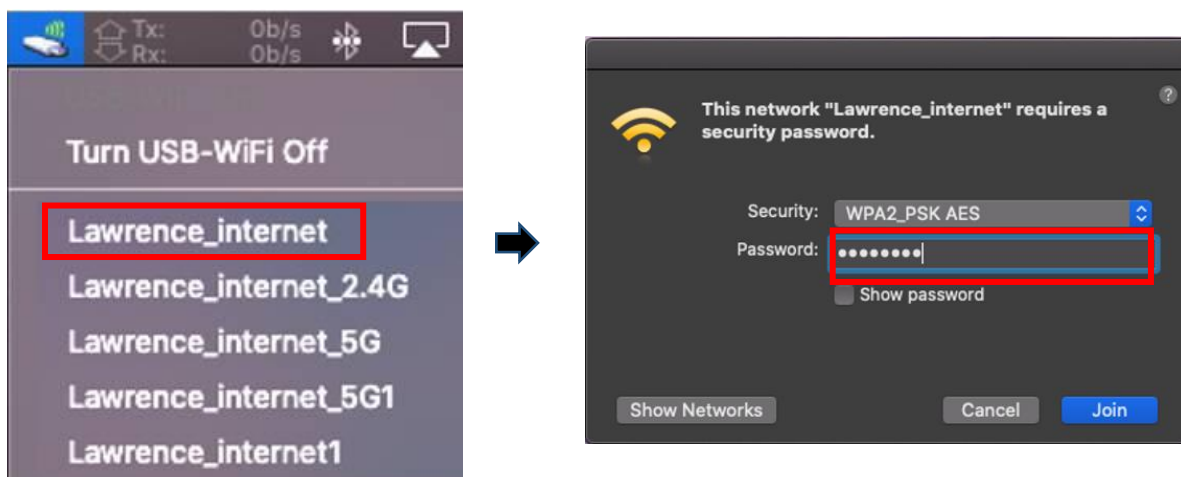
1. After you restart the computer, you can see Wi-Fi USB adapter icon  on the top-right taskbar. Click the icon and then click "Turn USB-WiFi On" to activate the adapter.



2. After you turn on the USB WiFi, click the Wi-Fi USB adapter icon  and select **“Join Other Network”**.



3. Select the Wi-Fi Network (SSID) and enter the password if it is required.



4. Establish connection that lets you access the Internet when you see the icon on the top-right taskbar.



V. Advanced Feature

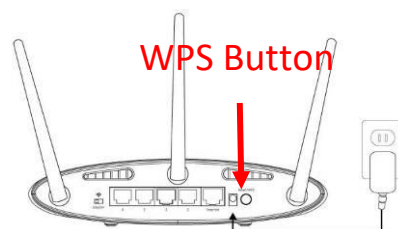
WPS (Wi-Fi Protected Setup) is a simple, alternative way to establish connections between WPS compatible devices when using the Wi-Fi Adapter on a Windows computer. When WPS is activated in the correct manner for two compatible devices, they will automatically connect to each other without a password required.

V-1. Software WPS

1. To support WPS, driver installation is a prerequisite. Please refer to **section III** to install the driver first.
2. On your Wi-Fi Router or AP, press and hold the WPS button for a short while to activate WPS.



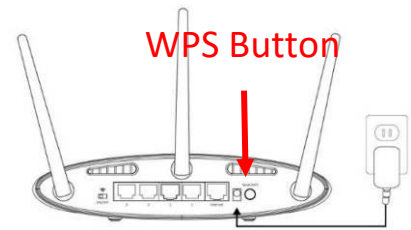
Please check the instructions of your Wi-Fi Router or AP to activate the WPS correctly.



3. On the USB adapter, please refer to **section III-3-1-2** and skip “Enter Password” if the procedures are correct.
4. The process takes a short while to establish connection. Once it’s done, you can access the Internet immediately.

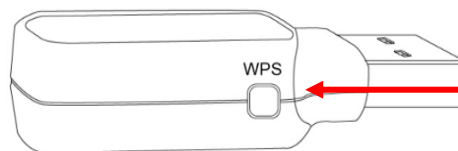
V-2. Hardware WPS

1. To support WPS, driver installation is a prerequisite. Please refer to **section III** to install driver first.
2. On your Wi-Fi Router or AP, press the WPS button for the correct time length to activate WPS.



Please check the instructions of your Wi-Fi Router or AP to activate WPS correctly.

3. On the USB adapter, immediately, activate the WPS function by pressing and holding the "WPS" button for a short while.



EW-7611UCB WPS Button

4. The process takes a while to establish connection. Once it's done, you can access the Internet right away.

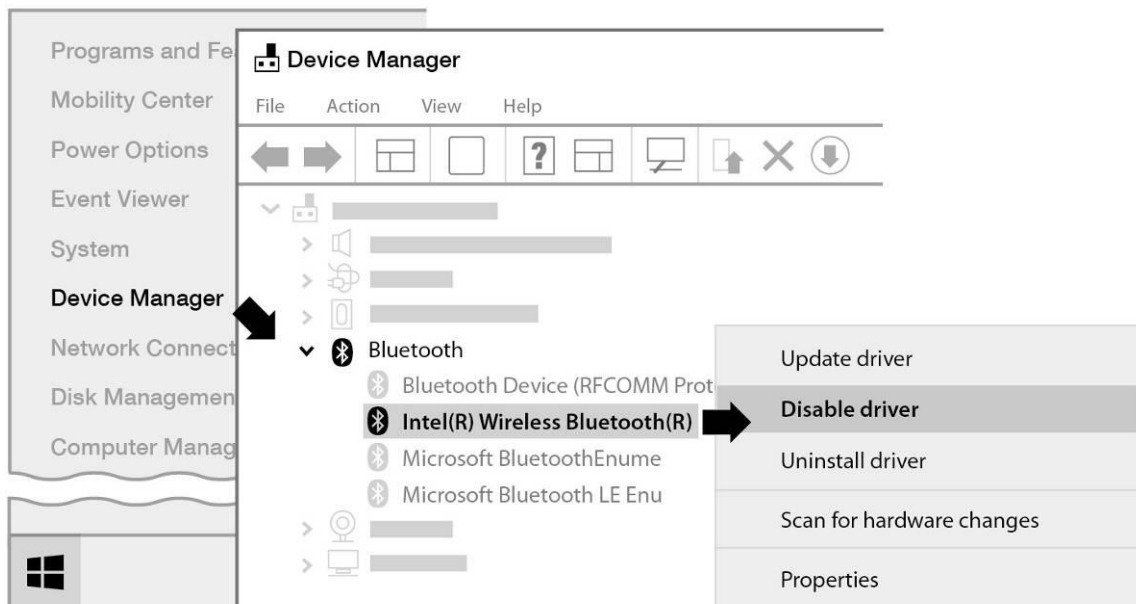
VI. Frequently Asked Question (FAQ)

Q1. Why doesn't the Wi-Fi icon display on the Windows taskbar?

- A. Your computer doesn't support Plug-and-Play for this device. Please go to section III-2, to download and install the driver and try again.

Q2. How to disable the existing Bluetooth device?



- A. Right-click the Windows **Start** button , and select the "**Device Manager**". Expand all the Bluetooth devices. Right-click on target device and disable the bluetooth device one by one.

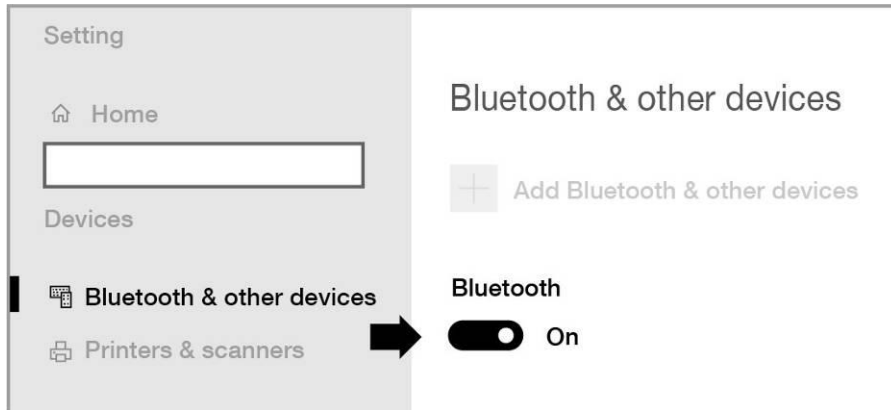


Q3. After the driver is installed, why doesn't the Wi-Fi icon display on the Windows taskbar?

- A. For Windows 7, please right-click "**Date and Time**" at the taskbar and select "**Properties**". Find the system item "**Network**", set the behaviors as "**On**". The Wi-Fi icon will then be displayed on the Windows Taskbar.

Q4. Why doesn't the Bluetooth icon display on the Windows taskbar?

A1. Click Windows **Start** button , and click "**Setting**" , select "**Device and other setting**", and set the status as "**On**" to enable the Bluetooth service.



A2. If the Bluetooth icon still doesn't appear, you may need to install the driver and try again. Please go to section III-2, to download and install the driver and try again.

VII. More Information

For more information, please visit our website with the following URL or scan the QR code:

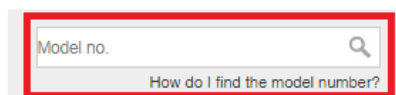
<https://www.edimax.com/download>



Please search the model number to enter the referred page.

Download

To select your product and find related download materials, enter the model number into the search box on the right side or follow the simple steps below:
*Feel free to contact us anytime if you need help or if you can't find your product.



VIII. Safety Instructions

The following general safety guidelines are provided to help ensure your own personal safety and protect your product from potential damage. Remember to consult the product user instructions for more details.

- This product is designed for indoor use only.
- Static electricity can be harmful to electronic components. Discharge static electricity from your body (i.e. touching grounded bare metal) before touching the product.
- The device contains no user serviceable parts. Do not attempt to service the product and never disassemble the product.
- Do not spill food or liquid on your product and never push any objects into the openings of your product.
- Do not use this product near water, areas with high humidity, or condensation.
- Keep the product away from radiators and other heat sources.
- This device is not designed to be operated by children.
- Always unplug the product from mains power before cleaning and use a dry lint free cloth only

IX. Simplified EU Declaration of Conformity

Hereby, Edimax Technology declares that the radio equipment type, Wi-Fi USB Adapter, is in compliance with Directive 2014/53/EU, 2014/35/EU.

The full text of the EU declaration of conformity is available at the following internet address:

<https://www.edimax.com/download/doc>




COPYRIGHT

Copyright © Edimax Technology Co., Ltd. all rights reserved. No part of this publication may be reproduced, transmitted, transcribed, stored in a retrieval system, or translated into any language or computer language, in any form or by any means, electronic, mechanical, magnetic, optical, chemical, manual or otherwise, without the prior written permission from Edimax Technology Co., Ltd.

Edimax Technology Co., Ltd. makes no representations or warranties, either expressed or implied, with respect to the contents hereof and specifically disclaims any warranties, merchantability, or fitness for any particular purpose. Any software described in this manual is sold or licensed as is. Should the programs prove defective following their purchase, the buyer (and not this company, its distributor, or its dealer) assumes the entire cost of all necessary servicing, repair, and any incidental or consequential damages resulting from any defect in the software. Edimax Technology Co., Ltd. reserves the right to revise this publication and to make changes from time to time in the contents hereof without the obligation to notify any person of such revision or changes.

The product you have purchased and the setup screen may appear slightly different from those shown in this QIG. The software and specifications are subject to change without notice. Please visit our website www.edimax.com for updates. All brand and product names mentioned in this manual are trademarks and/or registered trademarks of their respective holders.

	AT	BE	BG	HR	CY	CZ	DK	
	EE	FI	FR	DE	EL	HU	IE	
	IT	LV	LT	LU	MT	NL	PL	
	PT	RO	SK	SI	ES	SE	UK	UK(NI)

The device is restricted to indoor use only when operating in the 5150 to 5350 MHz frequency range.

Federal Communication Commission Interference Statement

This equipment has been tested and found to comply with the limits for a Class B digital device, pursuant to Part 15 of FCC Rules. These limits are designed to provide reasonable protection against harmful interference in a residential installation. This equipment generates, uses, and can radiate radio frequency energy and, if not installed and used in accordance with the instructions, may cause harmful interference to radio communications. However, there is no guarantee that interference will not occur in a particular installation. If this equipment does cause harmful interference to radio or television reception, which can be determined by turning the equipment off and on, the user is encouraged to try to correct the interference by one or more of the following measures:

1. Reorient or relocate the receiving antenna.
2. Increase the separation between the equipment and receiver.
3. Connect the equipment into an outlet on a circuit different from that to which the receiver is connected.
4. Consult the dealer or an experienced radio technician for help.

FCC Caution

This device and its antenna must not be co-located or operating in conjunction with any other antenna or transmitter. This device complies with Part 15 of the FCC Rules. Operation is subject to the following two conditions: (1) this device may not cause harmful interference, and (2) this device must accept any interference received, including interference that may cause undesired operation. Any changes or modifications not expressly approved by the party responsible for compliance could void the authority to operate equipment.

Federal Communications Commission (FCC) Radiation Exposure Statement

This equipment complies with FCC radiation exposure set forth for an uncontrolled environment. In order to avoid the possibility of exceeding the FCC radio frequency exposure limits, human proximity to the antenna shall not be less than 0.5 cm during normal operation.

RED Compliance Statement

Compliance with 2014/53/EU Radio Equipment Directive (RED)

In accordance with Article 10.8(a) and 10.8(b) of the RED, the following table provides information on the frequency bands used and the maximum RF transmit power of the product for sale in the EU:

Frequency range (MHz)	Max. Transmit Power (dBm)
2400-2483.5	19.99 dBm
2400-2483.5 (BR/EDR)	8.74 dBm
2400-2483.5 (LE)	3.15 dBm
5150-5250	22.97 dBm
5250-5350	22.87 dBm
5470-5725	22.92 dBm

A simplified DoC shall be provided as follows: Article 10(9)

Hereby, Edimax Technology Co., Ltd. declares that the radio equipment type **11ac 1T1R Wireless LAN with Bluetooth USB Dongle** is in compliance with Directive 2014/53/EU

The full text of the EU declaration of conformity is available at the following internet address: <http://www.edimax.com/edimax/global/>

Safety

This equipment is designed with the utmost care for the safety of those who install and use it. However, special attention must be paid to the dangers of electric shock and static electricity when working with electrical equipment. All guidelines of this and of the computer manufacture must therefore be allowed at all times to ensure the safe use of the equipment.

EU Countries Intended for UseThe ETSI version of this device is intended for home and office use in Austria, Belgium, Bulgaria, Croatia, Cyprus, Czech, Denmark, Estonia, Finland, France, Germany, Greece, Hungary, Ireland,

Italy, Latvia, Lithuania, Luxembourg, Malta, Netherlands, Poland, Portugal, Romania, Slovakia, Slovenia, Spain, Sweden, Turkey, and United Kingdom. The ETSI version of this device is also authorized for use in EFTA member states: Iceland, Liechtenstein, Norway, and Switzerland.

EU Countries Not Intended for Use

None

EU Declaration of Conformity

- English:** This equipment is in compliance with the essential requirements and other relevant provisions of Directive 2014/53/EU, 2014/35/EU.
- Français:** Cet équipement est conforme aux exigences essentielles et autres dispositions de la directive 2014/53/EU, 2014/35/EU.
- Čeština:** Toto zařízení je v souladu se základními požadavky a ostatními příslušnými ustanoveními směrnice 2014/53/EU, 2014/35/EU.
- Polski:** Urządzenie jest zgodne z ogólnymi wymaganiami oraz szczególnymi warunkami określonymi Dyrektywą UE 2014/53/EU, 2014/35/EU.
- Română:** Acest echipament este în conformitate cu cerințele esențiale și alte prevederi relevante ale Directivei 2014/53/UE, 2014/35/UE.
- Русский:** Это оборудование соответствует основным требованиям и положениям Директивы 2014/53/EU, 2014/35/EU.
- Magyar:** Ez a berendezés megfelel az alapvető követelményeknek és más vonatkozó irányelveknek (2014/53/EU, 2014/35/EU).
- Türkçe:** Bu cihaz 2014/53/EU, 2014/35/EU direktifleri zorunlu istekler ve diğer hükümlerle ile uyumludur.
- Українська:** Обладнання відповідає вимогам і умовам директиви 2014/53/EU, 2014/35/EU.
- Slovenčina:** Toto zariadenie spĺňa základné požiadavky a ďalšie príslušné ustanovenia smerníc 2014/53/EU, 2014/35/EU.
- Deutsch:** Dieses Gerät erfüllt die Voraussetzungen gemäß den Richtlinien 2014/53/EU, 2014/35/EU.
- Español:** El presente equipo cumple los requisitos esenciales de la Directiva 2014/53/EU, 2014/35/EU.
- Italiano:** Questo apparecchio è conforme ai requisiti essenziali e alle altre disposizioni applicabili della Direttiva 2014/53/EU, 2014/35/UE.
- Nederlands:** Dit apparaat voldoet aan de essentiële eisen en andere van toepassing zijnde bepalingen van richtlijn 2014/53/EU, 2014/35/EU.
- Português:** Este equipamento cumpre os requisitos essenciais da Directiva 2014/53/EU, 2014/35/EU.
- Norsk:** Dette utstyret er i samsvar med de viktigste kravene og andre relevante regler i Direktiv 2014/53/EU, 2014/35/EU.
- Svenska:** Denna utrustning är i överensstämmelse med de väsentliga kraven och övriga relevanta bestämmelser i direktiv 2014/53/EU, 2014/35/EU.
- Dansk:** Dette udstyr er i overensstemmelse med de væsentligste krav og andre relevante forordninger i direktiv 2014/53/EU, 2014/35/EU.
- suomen kieli:** Tämä laite täyttää direktiivien 2014/53/EU, 2014/35/EU. oleelliset vaatimukset ja muut asiaankuuluvat määräykset.



WEEE Directive & Product Disposal



At the end of its serviceable life, this product should not be treated as household or general waste. It should be handed over to the applicable collection point for the recycling of electrical and electronic equipment, or returned to the supplier for disposal.

Declaration of Conformity

We, Edimax Technology Co., Ltd., declare under our sole responsibility, that the equipment described below complies with the requirements of the European Radio Equipment directives.

Equipment: 11ac 1T1R Wireless LAN with Bluetooth USB Dongle
Model No.: EW-7611UCB

The following European standards for essential requirements have been followed:

Directives 2014/53/EU

Spectrum : EN 300 328 V2.2.2 (2019-07)
 EN 301 893 V2.1.1 (2017-05)
EMC : EN 301 489-1 V2.2.0 (2017-03), Class B
 EN 301 489-17 V3.2.0 (2017-03)
EMF : EN 62311:2008
Safety (LVD) : IEC 62368-1:2014 (2nd Edition) and/or EN 62368-1:2014+A11:2017

Edimax Technology Europe B.V.
Fijenhof 2,
5652 AE Eindhoven,
The Netherlands

Date & Place of Issue: 31/August/2022, Eindhoven

Signature: 

Printed Name: David Huang

Title: Director

a company of:

Edimax Technology Co., Ltd.
No. 278, Xinhua 1st Rd., Neihu Dist.,
Taipei City, Taiwan

Date & Place of Issue: 31/August/2022, Taipei

Signature: 

Printed Name: Hunter Chen

Title: Director



Declaration of Conformity

We, Edimax Technology Co., Ltd., declare under our sole responsibility, that the equipment described below complies with the requirements of the United Kingdom Radio Equipment directives.

Equipment: 11ac 1T1R Wireless LAN with Bluetooth USB Dongle
Model No.: EW-7611UCB

The following European standards for essential requirements have been followed:

Radio Equipment Regulations 2017 (S.I. 2017/1206)

Spectrum : EN 300 328 V2.2.2 (2019-07)
 EN 301 893 V2.1.1 (2017-05)
EMC : EN 301 489-1 V2.2.0 (2017-03), Class B
 EN 301 489-17 V3.2.0 (2017-03)
EMF : EN 62311:2008
Safety (LVD) : IEC 62368-1:2014 (2nd Edition) and/or EN 62368-1:2014+A11:2017

Edimax Technology Europe B.V.

Fijenhof 2,
5652 AE Eindhoven,
The Netherlands

Date & Place of Issue: 31/August/2022, Eindhoven

Signature: 

Printed Name: David Huang

Title: Director

a company of:

Edimax Technology Co., Ltd.
No. 278, Xinhua 1st Rd., Neihu Dist.,
Taipei City, Taiwan

Date & Place of Issue: 31/August/2022, Taipei

Signature: 

Printed Name: Hunter Chen

Title: Director

