



8-Port Gigabit Desktop Switch

GS-1008E V2

FEATURES

- **Gigabit High Speed:** Equipped 8 Gigabit Ethernet ports with full-duplex and 9K jumbo frames support.
- **Easy Plug-and-Play:** Simple setup with no software to install or configuration required.
- **High Performance & Reliable Connection:** Supports IEEE 802.3x Flow Control, Auto-Negotiation, No-Blocking Wire Speed, Auto-MDI/MDI-X, Auto-Correction and loop detection.
- **Energy Efficient & Power Saving:** Complies with IEEE 802.3az Energy Efficient Ethernet, Inactive Link Detection and Cable Length Detection for power saving.
- **Quiet Fanless, Wall-Mount, Durable Design:** Fanless, wall-mounted design quietly integrates into your environment with durable metal casing.

OVERVIEW

The GS-1008E V2 is a 8-port Gigabit desktop switch, designed to upgrade or expand the network with high-speed and enhanced performance, while maintaining a compact form factor. It boasts outstanding performance and high efficiency, while its store and forward packet-switching technology offers reliable data transfer, ideal for network connectivity in the home, small office, small-and-Medium business and enterprise environments.

The GS-1008E V2 is designed with fanless, wall-mounted hole and metal case. Experience easy plug-and-play, flexible-deployment, cost-effective, energy efficient solution for users looking to extend networks and fulfill their high bandwidth data transfer and streaming needs.

Gigabit High-Speed Network

With Gigabit speed, the GS-1008E V2 brings high-flexibility and high-bandwidth connectivity and delivers up to 2000Mbps of throughput per port at full-duplex mode to servers, workstations and other attached devices. It enables you to save time when transferring large files. 9K jumbo frames are also supported to improve network utilization in large files transfer.

Easy Plug & Play, No Installation Required

Just plug Ethernet enabled devices into the switch. Data can be transmitted through existing standard CAT-5e Ethernet cables with no additional cables, software setup or configuration required. All In all, it lowers the installation costs and simplifies deployment efforts.

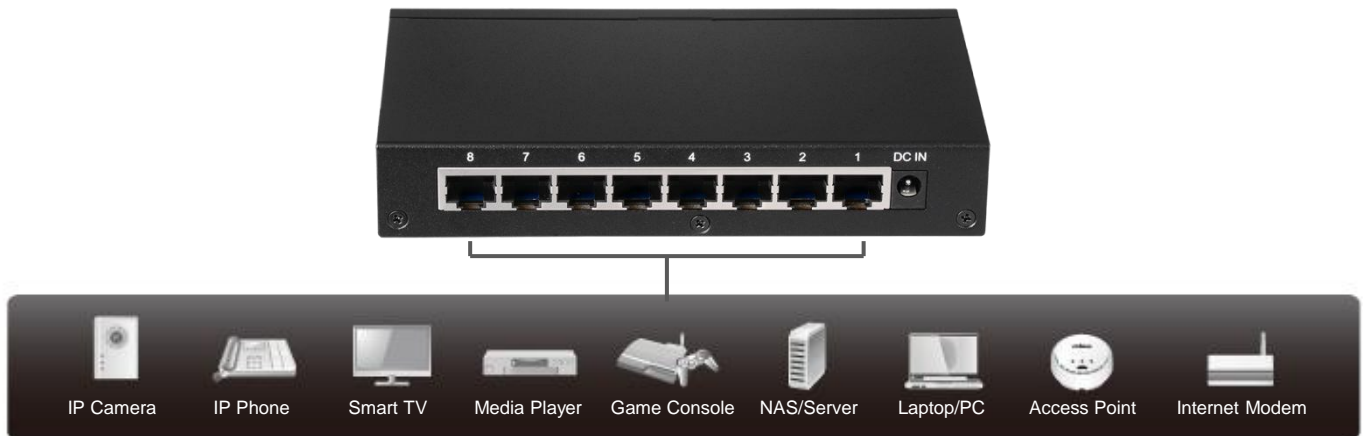
High Performance and Reliable Connection

The GS-1008E V2 provides you with maximum speed and highest performance possible, for each device connected to your network with features of IEEE 802.3x Flow Control, Auto-Negotiation, No-Blocking Wire Speed, Auto-MDI/MDI-X, Auto-Correction, Loop Detection, Store-and-Forward Architecture which filters fragment & CRC error packets for maximizing network performance.

Energy Efficient and Power Saving

To comply with the IEEE802.3az Energy Efficient Ethernet standard, the GS-1008E V2 provides power-saving functionality to reduce energy consumption and save costs. Featuring with Inactive Link Detection, inactive devices without power delivery and Cable Length Detection, the shorter cable length, the less power consumption, the GS-1008E V2 can reduce or adjust power usage accordingly.

APPLICATION DIAGRAM



SPECIFICATIONS

HARDWARE

Ports	8 x RJ-45 10/100/1000Base-T ports
Transmission Method	Store and forward
LED Indicators	Per port: Link/Act Per unit: Power
Power Input	5V/1A (External power adapter)
Power Consumption	3W (Max.)
Mounting	Desktop/Wall
Housing	Metal
Fan	Fanless
Dimensions	154(W) x 85(D) x 26(H) mm
Weight	325g

PERFORMANCE

Switching Capacity	16Gbps
MAC Address	4K
Buffer Memory	192KB
Jumbo Frame	9K (Bytes)
Filtering/Forwarding Rates	1000Mbps port – 1,488,000pps 100Mbps port – 148,800pps 10Mbps port – 14,880pps Max. 11.9Mpps

OTHERS

Standard	IEEE 802.3 10BaseT Ethernet IEEE 802.3u 100BaseTX Fast Ethernet IEEE 802.3ab 1000BaseT Gigabit Ethernet IEEE 802.3x Full-duplex and flow control IEEE 802.3az Energy efficient Ethernet
Certification	CE, FCC
Environmental Condition	Operating Temperature: 32~104°F (0~40°C) Storage Temperature: -40~158°F (-40~70°C) Operating Humidity: 10~90% (NonCondensing) Storage Humidity: 5~90% (NonCondensing)

Maximum performance, actual data rates, and coverage will vary depending on network conditions and environmental factors. Product specifications and design are subject to change without notice.
Copyright © 2020 Edimax Technology Co. Ltd. All rights reserved. www.edimax.com 2