

GS-1008PL V2/GS-1008P V2/ ES-1008P V2

Quick Installation Guide

09-2020 / v1.1

Edimax Technology Co., Ltd.

No. 278, Xinhu 1st Rd., Neihu Dist., Taipei City, Taiwan

Email: support@edimax.com.tw

Edimax Technology Europe B.V.

Fijenhof 2, 5652 AE Eindhoven, The Netherlands

Email: support@edimax.nl

Edimax Computer Company

3444 De La Cruz Blvd., Santa Clara, CA 95054, USA

Email: support@edimax.com

Contents

<i>I. Product Information</i>	1
I-1. Package Contents.....	2
I-2. Hardware Overview	2
I-3. LED Status	3
I-4. DIP Switch Status.....	4
<i>II. Hardware Installation</i>	5

I. Product Information

The Edimax GS-1008P V2 and GS-1008PL V2 PoE+ switch equipped with eight 1G Gigabit Ethernet ports and ES-1008P V2 PoE+ switch equipped with eight 10M/100M Ethernet ports.

For efficient network utilization the GS-1008P V2, GS-1008PL V2 and ES-1008P V2 PoE+ switch allow the relevant settings (PoE distance, QoS, and VLAN) to be optimized via a single DIP switch.

You can find all supporting documents from the link below or via QR Code:

<https://www.edimax.com/download>

(Once you've visited the Edimax official website, please enter the model no.

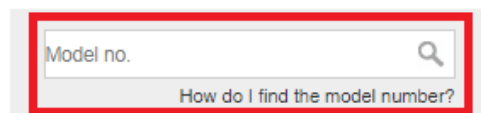


“GS-1008PL V2, GS-1008P V2 or ES-1008P V2” into the search box to search for your product.)

Download

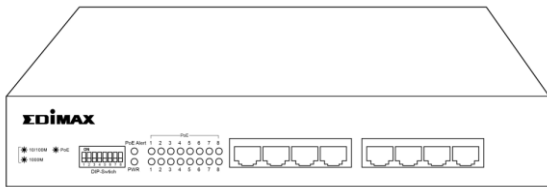
To select your product and find related download materials, enter the model number into the search box on the right side or follow the simple steps below:

*Feel free to contact us anytime if you need help or if you can't find your product.



I-1. Package Contents

Before start using this product, please check if there is anything missing in the package, and contact your dealer to claim the missing item(s):



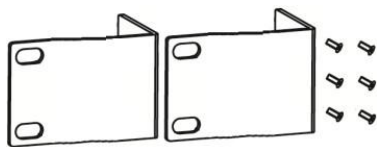
**GS-1008PL V2, GS-1008P V2
or ES-1008P V2**



Quick Installation Guide

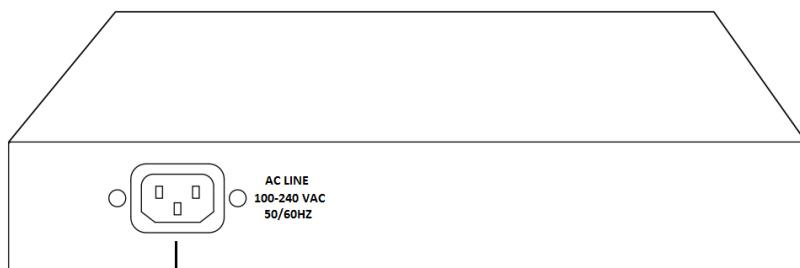
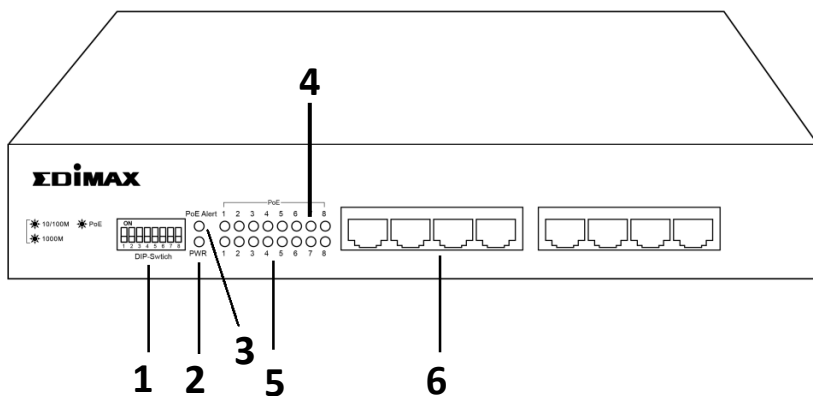


Power Cord



Rack-Mount Kit

I-2. Hardware Overview



7

No.	Description
1	DIP Switch
2	PWR Indicator
3	PoE Alert Indicator
4	PoE Indicator
5	Data Rate Indicator
6	LAN Ports x8
7	Power Jack

I-3. LED Status

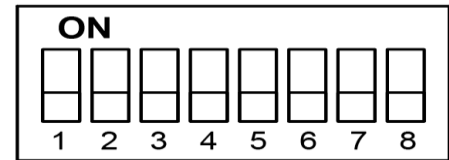
Function	Color	Status	Descriptions
PWR	Green	On	Power on
		Off	Power off
PoE Alert	Green	On	Total PoE power consumed is exceeding PoE power budget*
		Off	Total PoE power is within PoE power budget*
PoE	Green	On	Feeding power to PoE devices (Link at 1000Mbps)
		Off	PoE/PoE+ function is not active
Data Rate	Green	On	Link at 1000Mbps
	Amber	On	Link at 10/100Mbps
	Green/Amber	Blinking	Sending or receiving data
	Green/Amber	Off	No data transmission or No device connected to this port

***NOTE: Total maximum PoE power budget:**

- **GS-1008P V2/ES-1008P V2: 130W**
- **GS-1008PL V2: 70W**

I-4. DIP Switch Status

NOTE: After changing DIP switch status, please unplug and replug the power.



DIP-Switch

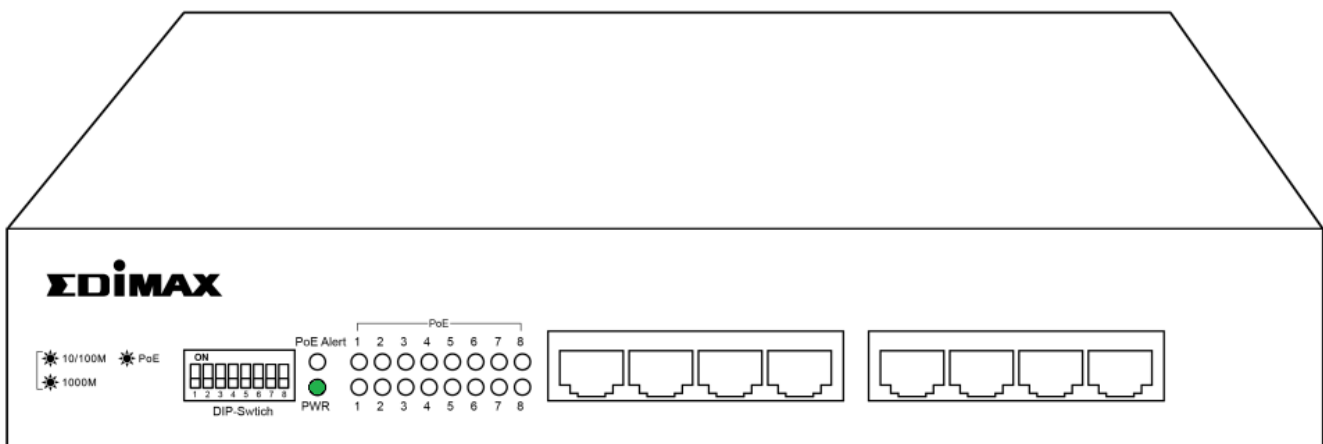
DIP Switch Number	PoE Port	Status	Description
1. PoE Distance Extend	Port 1&2	On	PoE distance extend to 200m or above, data rates decrease to 10Mbps
		Off	The data rates and distance will be auto-negotiated
2. PoE Distance Extend	Port 3&4	On	PoE distance extend to 200m or above, data rates decrease to 10Mbps
		Off	The data rates and distance will be auto-negotiated
3. VLAN	Port 1~ 4	On	VLAN enable
		Off	VLAN disable
4. QoS	All	On	QoS enable
		Off	QoS disable
5. PoE Distance Extend	Port 5	On	PoE distance extend to 200m or above, data rates decrease to 10Mbps
		Off	The data rates and distance will be auto-negotiated
6. PoE Distance Extend	Port 6	On	PoE distance extend to 200m or above, data rates decrease to 10Mbps
		Off	The data rates and distance will be auto-negotiated
7. PoE Distance Extend	Port 7	On	PoE distance extend to 200m or above, data rates decrease to 10Mbps
		Off	The data rates and distance will be auto-negotiated
8. VLAN	Port 5~7	On	Port 5~7 VLAN enable
		Off	Port 5~7 VLAN disable

II. Hardware Installation

This section will guide you through the steps to set up the GS-1008PL V2, GS-1008P V2 and ES-1008P V2.

1. Plug power adapter into a wall outlet.

NOTE: Ensure the “PWR” LED lights on Green.



2. Plug an Ethernet cable from the LAN port to any network device that equipped with an Ethernet port.

NOTE: Ensure the “LAN” LED lights on Green or Amber.

COPYRIGHT

Copyright © Edimax Technology Co., Ltd. all rights reserved. No part of this publication may be reproduced, transmitted, transcribed, stored in a retrieval system, or translated into any language or computer language, in any form or by any means, electronic, mechanical, magnetic, optical, chemical, manual or otherwise, without the prior written permission from Edimax Technology Co., Ltd.

Edimax Technology Co., Ltd. makes no representations or warranties, either expressed or implied, with respect to the contents hereof and specifically disclaims any warranties, merchantability, or fitness for any particular purpose. Any software described in this manual is sold or licensed as is. Should the programs prove defective following their purchase, the buyer (and not this company, its distributor, or its dealer) assumes the entire cost of all necessary servicing, repair, and any incidental or consequential damages resulting from any defect in the software. Edimax Technology Co., Ltd. reserves the right to revise this publication and to make changes from time to time in the contents hereof without the obligation to notify any person of such revision or changes.

The product you have purchased and the setup screen may appear slightly different from those shown in this QIG. The software and specifications are subject to change without notice. Please visit our website www.edimax.com for updates. All brand and product names mentioned in this manual are trademarks and/or registered trademarks of their respective holders.

Federal Communication Commission Interference Statement

This equipment has been tested and found to comply with the limits for a Class A digital device, pursuant to Part 15 of the FCC Rules. These limits are designed to provide reasonable protection against harmful interference when the equipment is operated in a commercial environment. This equipment generates, uses, and can radiate radio frequency energy and, if not installed and used in accordance with the instruction manual, may cause harmful interference to radio communications. Operation of this equipment in a residential area is likely to cause harmful interference in which case the user will be required to correct the interference at his own expense.

FCC Radiation Exposure Statement

This device complies with FCC radiation exposure limits set forth for an uncontrolled environment and it also complies with Part 15 of the FCC RF Rules. This equipment must be installed and operated in accordance with provided instructions and the antenna(s) used for this transmitter must be installed to provide a separation distance of at least 20 cm from all persons and must not be co-located or operating in conjunction with any other antenna or transmitter. End-users and installers must be provided with antenna installation instructions and consider removing the no-collocation statement.

This device complies with Part 15 of the FCC Rules. Operation is subject to the following two conditions:

- (1) this device may not cause harmful interference, and
- (2) this device must accept any interference received, including interference that may cause undesired operation.

Caution!

Any changes or modifications not expressly approved by the party responsible for compliance could void the user's authority to operate the equipment.

R&TTE Compliance Statement

This equipment complies with all the requirements of DIRECTIVE 2014/30/EU OF THE EUROPEAN PARLIAMENT AND THE COUNCIL of March 9, 1999 on radio equipment and telecommunication terminal equipment and the mutual recognition of their conformity (R&TTE). The R&TTE Directive repeals and replaces in the directive 98/13/EEC (Telecommunications Terminal Equipment and Satellite Earth Station Equipment) As of April 8, 2000.

Safety

This equipment is designed with the utmost care for the safety of those who install and use it. However, special attention must be paid to the dangers of electric shock and static electricity when working with electrical equipment. All guidelines of this and of the computer manufacture must therefore be allowed at all times to ensure the safe use of the equipment.

EU Countries Intended for Use

The ETSI version of this device is intended for home and office use in Austria, Belgium, Bulgaria, Cyprus, Czech, Denmark, Estonia, Finland, France, Germany, Greece, Hungary, Ireland, Italy, Latvia, Lithuania, Luxembourg, Malta, Netherlands, Poland, Portugal, Romania, Slovakia, Slovenia, Spain, Sweden, Turkey, and United Kingdom. The ETSI version of this device is also authorized for use in EFTA member states: Iceland, Liechtenstein, Norway, and Switzerland.

EU Countries Not Intended for Use

None

EU Declaration of Conformity

- English:** This equipment is in compliance with the essential requirements and other relevant provisions of Directive 2014/30/EU.
- Français:** Cet équipement est conforme aux exigences essentielles et autres dispositions de la directive 2014/30/EU.
- Čeština:** Toto zařízení je v souladu se základními požadavky a ostatními příslušnými ustanoveními směrnic 2014/30/EU.
- Polski:** Urządzenie jest zgodne z ogólnymi wymaganiami oraz szczególnymi warunkami określonymi Dyrektywą UE 2014/30/EU.
- Română:** Acest echipament este în conformitate cu cerințele esențiale și alte prevederi relevante ale Directivei 2014/30/EU.
- Русский:** Это оборудование соответствует основным требованиям и положениям Директивы 2014/30/EU.
- Magyar:** Ez a berendezés megfelel az alapvető követelményeknek és más vonatkozó irányelveknek (2014/30/EU).
- Türkçe:** Bu cihaz 2014/30/EU. direktifleri zorunlu istekler ve diğer hükümlerle ile uyumludur.
- Українська:** Обладнання відповідає вимогам і умовам директиви 2014/30/EU.
- Slovenčina:** Toto zariadenie spĺňa základné požiadavky a ďalšie príslušné ustanovenia smerníc 2014/30/EU.
- Deutsch:** Dieses Gerät erfüllt die Voraussetzungen gemäß den Richtlinien 2014/30/EU.
- Español:** El presente equipo cumple los requisitos esenciales de la Directiva 2014/30/EU.
- Italiano:** Questo apparecchio è conforme ai requisiti essenziali e alle altre disposizioni applicabili della Direttiva 2014/30/EU.
- Nederlands:** Dit apparaat voldoet aan de essentiële eisen en andere van toepassing zijnde bepalingen van richtlijn 2014/30/EU.
- Português:** Este equipamento cumpre os requisitos essenciais da Directiva 2014/30/EU.
- Norsk:** Dette utstyret er i samsvar med de viktigste kravene og andre relevante regler i Direktiv 2014/30/EU.
- Svenska:** Denna utrustning är i överensstämmelse med de väsentliga kraven och övriga relevanta bestämmelser i direktiv 2014/30/EU.
- Dansk:** Dette udstyr er i overensstemmelse med de væsentligste krav og andre relevante forordninger i direktiv 2014/30/EU.
- suomen kieli:** Tämä laite täyttää direktiivien 2014/30/EU. oleelliset vaatimukset ja muut asiaankuuluvat määräykset.

FOR USE IN **AT BE CY CZ DK EE FI FR DE GR HU**
IE IT LV LT LU MT NL PL PT SK SI ES SE
GB IS LI NO CH BG RO RU TR UA



WEEE Directive & Product Disposal



At the end of its serviceable life, this product should not be treated as household or general waste. It should be handed over to the applicable collection point for the recycling of electrical and electronic equipment, or returned to the supplier for disposal.

Declaration of Conformity

We, Edimax Technology Co., Ltd., declare under our sole responsibility, that the equipment described below complies with the requirements of the European R&TTE directives.

Equipment: 8-Port Gigabit, 8-Port Long range PoE Switch (GS-1008PL V2)
8-Port Fast Ethernet PoE+ Switch (ES-1008P V2)
8-port Gigabit Ethernet with 8-Port PoE Switch (GS-1008P V2)
Model No.: GS-1008PL V2/ES-1008P V2/GS-1008P V2

The following European standards for essential requirements have been followed:

Directives 2014/30/EU

EMC : EN 55032:2015+AC:2016
EN 61000-3-2:2014 Class A
EN 61000-3-3:2013
EN 55035:2017
Safety (LVD) : EN 62368-1:2014+A11:2017

Edimax Technology Europe B.V.
Fijenhof 2,
5652 AE Eindhoven,
The Netherlands

a company of :
Edimax Technology Co., Ltd.
No. 278, Xinhu 1st Rd.,
Neihu Dist., Taipei City,
Taiwan

Signature:

Printed Name: David Huang
Title: Director
Edimax Technology Europe B.V.



Date of Signature: Aug., 2020

Signature:

Printed Name: Albert Chang

Title: Director

Edimax Technology Co., Ltd.