

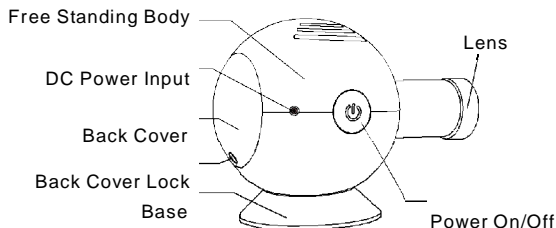
# ANALOG PROJECTION CLOCK 396255

## INTRODUCTION

This Analog Projection Clock combines the conventional clock design with modern technology, its features include:

- ◆ Analog clock display.
- ◆ Adjustable projected clock size.
- ◆ Safe and long life LED lighting technology.
- ◆ Desk placement or ceilings mount.

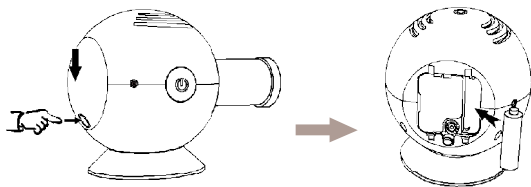
## DESCRIPTION



## INSTALLING / REPLACING THE BATTERY

The battery is only for powering the clock. The lighting of the clock is powered by A.C power.


1. Remove the back cover by pressing the lock on the back cover with one hand and pushing down the back cover with another hand.
2. Insert one fresh AA battery in the compartment as indicated by polarity symbols (+ and -) marked inside.
3. Replace the back cover.

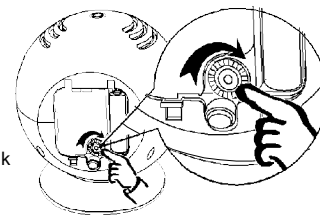


## USING THE AC ADAPTOR

The lighting of the Clock is powered by AC through the supplied switching power AC adaptor. Connect one end of the AC adaptor to DC IN on the Clock and the other to your house power outlet.

## SETTING THE TIME

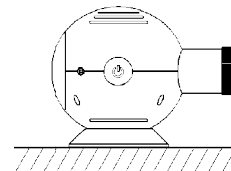
1. Turn on the power by pressing .
2. Project the clock on a white wall or ceiling.
3. Focus the projector image by pulling in and out the lens.
4. Open the back cover to expose the clock module.
5. Set the correct time by turning the time setting knob.



## PLACING THE CLOCK

You can place the clock on the desk or mount on the ceiling.

### On the desk



### On the ceiling

