



SC016 Sweex 7.1 external USB sound card

Introduction

- Do not expose the Sweex 7.1 external USB sound card to extreme temperatures. Do not place the device in direct sunlight or in the direct vicinity of heating elements.
- Do not use Sweex 7.1 external USB sound card in extremely moist or dusty surroundings.
- Protect the device against powerful shocks and falls – they may damage the internal electronics.
- Never attempt to open the device yourself, there are no serviceable parts inside. Opening the device will cause the warranty to lapse.

Package contents

In this package you will find:

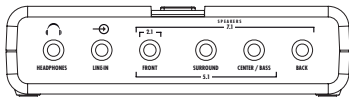
- 7.1 USB Sound Card
- USB A – B cable (100 cm)
- CD with software, drivers and this manual

If you find that any of the package contents are missing, please return the package to the sales point where it was bought.

Connections

On the sound card you will find the following connections:

Front:



Headphones

Connect your headphones to this output

Line-IN

This input is for recording from stereo line-level sources

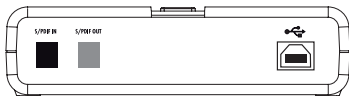
Front

Connect your 2.0 or 2.1 speaker set to this output. In surround sound configurations, connect the front speakers to this output.

Surround

In 5.1 speaker configurations, connect the rear speakers to this output. For 7.1, connect the side speakers to this output.

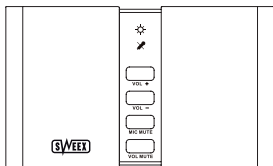
Center / Bass For 5.1 and 7.1 configurations, connect the center / bass channel to this output.
 Back In 7.1 configurations, connect the rear speakers to this output. This output is not used for 5.1!

Back:

S/PDIF IN You can connect a S/PDIF source to this input for recording. Please note that it is not possible to use the soundcard as receiver, you cannot connect your DVD player, Xbox® or other device to the card and play it's sound back on the speakers

S/PDIF OUT This is the S/PDIF output, during operation, you will see a red light shine through. If you have trouble getting 5.1 / 7.1 surround sound from the S/PDIF OUT, please refer to the troubleshooting section of this manual.

USB Connect the USB port of your soundcard to your computer using the included cable.

Top:

Power LED This light indicates that the card receives power from the computer.

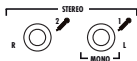
Mic mute LED This light indicates that the microphone inputs are muted

Volume up Press this button to increase volume

Volume down Press this button to decrease volume

Mic mute This button mutes / unmutes the microphone inputs

Vol mute This button mutes / unmutes all outputs

Side:

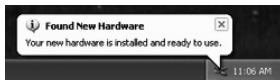
Mic 2 This is the secondary microphone input, in stereo it is mapped to the left channel.

Mic 1 This is the primary microphone input, used for mono recording and the right channel in stereo.

Software Installation

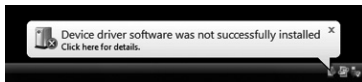
Connect the sound card to an USB port of your computer. Windows will automatically recognise the device and display the following message:

Windows XP



Note: The card is not yet ready to use! You still need to install the drivers and software, the drivers and software included with Windows XP will not work.

Vista



You can safely ignore this message.

Put the Sweex CD-ROM in your drive. The CD-ROM will start automatically. Click "Drivers and Software for XP and Vista" to start the installation.



Follow the instructions on screen to install the driver. After driver installation is complete, you must restart your computer.

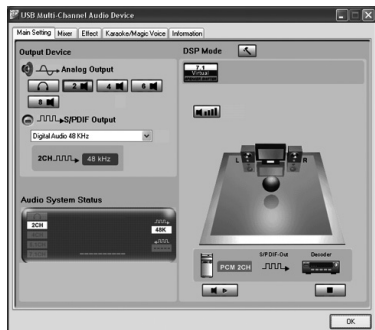
Usage

When installation is successful and after a reboot of the computer you will see the "USB Multi-Channel Audio Device" icon in the system tray at the bottom right of your screen:

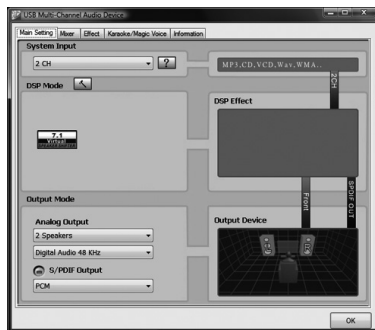


Double-click the icon to start the software for configuring the sound card:

Windows XP



Windows Vista



The sound card will automatically adapt its settings to the speakers you have connected (headphones / 2.0 or 2.1 / 5.1 / 7.1), in most cases you will not need to adjust any settings. If you notice that the card does not detect all speakers, you can change the “Analog Output” to manually select the right number of speakers.

Note:

In Windows Vista, you also have to change the “System Input” to the number of speakers you have. In Windows XP, this can be done through Start – Control Panel – Sound, Speech and Audio devices – Change the speaker settings – Advanced button

Uninstall

The software can be uninstalled through the “Add or remove Programs” icon from the Windows XP control panel, or the “Programs” icon in Vista’s control panel.

Troubleshooting:

- **I have 5.1 or 7.1 speakers and my center / bass channels are not working or give very distorted sound.**

> In this case the center / bass channels may be swapped to fix, open the sound card’s software, you will see a small icon:



next to your speaker settings in the Analog Output section. Click it, check the “Swap center / bass output” checkbox and click OK.

- **I cannot get more than 2 channels to play over the S/PDIF output**

> S/PDIF does not support more than 2 channels for normal uncompressed audio. This is not a limitation of the soundcard, but of S/PDIF itself. It is however possible to output already compressed 5.1 / 7.1 audio from a DVD through the S/PDIF output. To enable this, search for “S/PDIF Passthrough” in your DVD player software’s settings and enable it.

- **My sound stutters**

> This can happen when there is not enough USB bandwidth available for the sound card. Try to connect it to a different USB port, or through a USB 2.0 hub, or try disconnecting other USB devices.

Warranty

Thank you for purchasing this Sweex product. Sweex devotes ample attention and care to the quality, reliability, functionality, durability and user friendliness of all its products. In this way Sweex distinguishes itself in the market and can we convince you as a buyer to continue purchasing products of the Sweex brand. We wish you a lot of pleasure with your purchase.

An important extra advantage for you is the possibility of product registration.

After the registration of your product Sweex offers you a number of important yet equally useful advantages.

The biggest advantage is that by means of the online registration on www.sweex.com/12years warranty the warranty on the product is extended by a 10-year manufacturer's warranty (see the applicable conditions on this website). This in addition to the statutory 2-year warranty which is already available for the product. In total the warranty period will therefore amount to 12 years.

There are also other advantages:

For example, if you wish so, you are regularly informed by us of the latest developments in our assortment by means of a digital newsletter.

Where applicable, you also automatically receive the latest drivers and/or firmware from us for the product you purchased to preserve or improve the compatibility and the performance.

Moreover, our support desk can assist you faster in case of possible support questions about the product if you registered the product.

Sweex warranty conditions.

2-year standard warranty within the EU

- In a standard manner a warranty period of 2 years as from the purchase date is available for this Sweex product within the EU.
- Should you wish to invoke this warranty within the first 2 years after the purchase then you can directly apply to the point of sale where you purchased the product for the conditions and procedures.

10-year manufacturer's warranty

- However, in addition to the statutory 2-year standard warranty Sweex offers you an extended quality warranty of no less than 10 years, if you purchased your product within the EU.
- For more information, conditions and the registration form go to www.sweex.com/12years warranty and register within 30 days after the purchase of your product for the extended warranty period of in total 12 years.

Matters that are excluded from the warranty

- The warranty of Sweex only covers manufacturing defects. Excluded from the warranty are accessories like batteries, rechargeable batteries and also supplied software, where applicable.
- The liability of Sweex is limited to the costs of repair and/or replacement of the product covered by the warranty.
- Both warranty types (the 2-year standard warranty and the 10-year extended manufacturer's warranty) are null and void if the product has been opened, changes have been made, physical damage was caused to the product and if the product is used for another purpose than for which it is originally meant.

All brand names and associated rights mentioned in this manual are and remain the sole property of the rightful claimant.