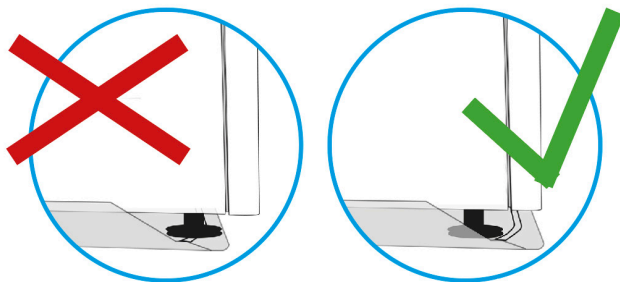
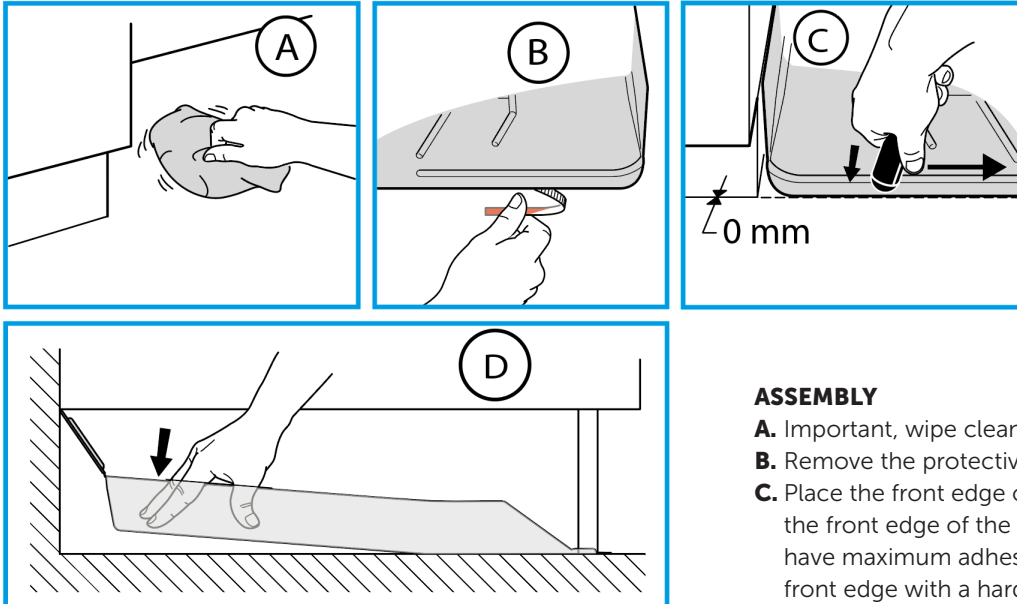


Assembly Instructions Whitegoods underlay Dishwasher Pro



ASSEMBLY

- A.** Important, wipe clean and dry.
- B.** Remove the protective film from the tape.
- C.** Place the front edge of the mat in line with the front edge of the base. For the tape to have maximum adhesion, press on top of the front edge with a hard object along the entire front edge.
- D.** Press the back of the mat down against the floor.

NOTE! Make sure the foot is inside the water barrier of the mat.

SCAN CODE FOR MORE INFO
ABOUT THE PRODUCT.



Product	RSK	Item no.	Dimensions mm
Tollco Whitegoods underlay Dishwasher Pro 45 cm	8039000	504556	450x500x40
Tollco Whitegoods underlay Dishwasher Pro 60 cm	8039001	506058	600x500x40



Tgnr 0505/01

TOLLCO AB
Rubanksgatan 4, 741 71 Knivsta, Sweden
Tel +46 18 34 90 10. info@tollco.se tollco.se

TOLLCO
Your protection against water damage

20211015